



The West Coast Wilderness Cycle Trail



Enjoy gentle cycling in a landscape rich in beauty, history and diversity.

4 Days, 3 Nights

Mild Grade



tour highlights

- Pristine tranquil bush
- Steeped in history
- Ancient forests
- Great company
- Treetops walkway experience included
- Experienced attentive guide

tour cost:

2025 / 2026

Low season **\$2095**
November, December, January, April

High season **\$2295**
February, March

tours run

November - April Starting in Christchurch

Custom Groups: Options are available for this tour

options

Single Supplement:

NZD\$545



Tuatara Tours NZ Ltd, PO Box 13544, Christchurch 8141, New Zealand
Phone: New Zealand: 0800 377 378, Australia: 1 800 044 633, World: +64 3 962 3280
Email: info@tuataratours.co.nz, Web: www.tuataratours.co.nz





The West Coast Wilderness Cycle Trail



Enjoy gentle cycling in a landscape rich in beauty, history and diversity.

4 Days, 3 Nights

Mild Grade

the tour

Follow the **West Coast Wilderness Cycle Trail** and enjoy gentle cycling in a landscape rich in beauty, history and diversity.

Distances average around 30 km a day, and the cycling is suitable for beginners and families. Where else but in Westland can you see such diversity: towns, alps, lakes, rivers, wetlands, ocean and native bush, all in such close proximity?

All meals are provided, and you'll stay in very comfortable accommodation.

at a glance

Day 1	Christchurch to Greymouth - Kumara	31km
Day 2	Kumara to Milltown	37km
Day 3	Milltown to Hokitika	33km
Day 4	Hokitika to Ross	33km

trip grading

To determine the grade of a particular adventure we consider a number of factors. These include the condition of the terrain, the altitude, the number of pass crossings and the length of the trip. **West Coast Wilderness Cycle Trail** is graded Mild: An average level of fitness. You should be comfortable biking 25km on well formed tracks and roads with average inclines at times. There is some low level mountain biking on this trail.

about your guide

Our guides are very experienced, friendly walkers and bikers who love to share their knowledge of New Zealand's flora and fauna and local history.

They all hold current first aid certificates, passenger driving licences and are the very best people to ensure your experience will be one to remember.

official partner

Tuatara Tours is proud to be in an official partnership with The New Zealand Cycle Trail.

The objective of the partnership is to create a nationwide network of cycle trails that connect the Great Rides with the rest of New Zealand.



Tuatara Tours NZ Ltd, PO Box 13544, Christchurch 8141, New Zealand
Phone: New Zealand: 0800 377 378, Australia: 1 800 044 633, World: +64 3 962 3280
Email: info@tuataratours.co.nz, Web: www.tuataratours.co.nz





The West Coast Wilderness Cycle Trail



Enjoy gentle cycling in a landscape rich in beauty, history and diversity.

4 Days, 3 Nights

Mild Grade

itinerary

Custom Groups: Options are available for this tour.

Day 1 Greymouth to Kumara - 31km biking

Welcome along! We leave Christchurch between 8:30am and 9am when your tour begins with a scenic coach journey from Christchurch across the Canterbury Plains and over Arthur's Pass to Greymouth. Originally established as home for hundreds of gold and coal miners following the 1860's gold rush, Greymouth today enjoys popularity as a base for fishing, hiking and other recreational activities with its wild river, rugged native bush-covered hills and pounding surf.

Today from Greymouth you'll start your ride cycling 12km down a coastal path on a raised dune system. Along the way enjoy views over several small settlements and the surrounding countryside as you follow the spectacular coastline of the Tasman Sea. The trail then continues on the scenic route south to Taramakau, between Greymouth and Hokitika. Turning inland from here, you'll head to Kumara along a historic tramway. Kumara is a former gold mining town and home of one of New Zealand's greatest early politicians, Richard Seddon. Tonight your overnight stay is in a charming historic hotel in Kumara

Day 2 Kumara to Milltown - 37km biking

The West Coast Wilderness Cycle Trail continues this morning with a ride through rainforest as you head towards Milltown.

This section of the route (and indeed the trail itself) is certain to become one of New Zealand's most popular cycle rides, offering stunning scenery and fascinating local history. You will pass through some of the best stands of native forest left in New Zealand on your journey today.

Milltown overlooks the Arahura Valley, an area once rich in gold and still known as the source of the highly prized pounamu (greenstone).

Tonight your stay is in Hokitika, a pretty seaside town known for its greenstone carving industry and home to many artisans and craftspeople.





The West Coast Wilderness Cycle Trail



Enjoy gentle cycling in a landscape rich in beauty, history and diversity.

4 Days, 3 Nights

Mild Grade

itinerary continued

Custom Groups: Options are available for this tour.

Day 3 Milltown to Hokitika - 33km biking

Your ride today starts at the head of the Arahura River, which rises from the Southern Alps and meets the Tasman Sea just north of Hokitika.

You'll pass water raceways, rich dairy farmland and the tranquil Lake Kaniere, described by some as "the most beautiful lake in New Zealand". Formed by glacial erosion in the last ice age, Lake Kaniere itself is only 8 km long and 2 km wide but can be as deep as 195 metres in places and is surrounded by verdant native bush, making it a popular spot for campers and holiday makers in the summer. You bike through a section of towering ancient rimu forest and tree ferns.

You will arrive in Hokitika early afternoon. There is an optional excursion by vehicle to the famous Hokitika Gorge.

Tonight, you'll spend a second night in Hokitika.

Day 4 Hokitika to Ross to Christchurch - 33km biking

Your day starts with an easy coastal ride, then follows the bush tramway past Lake Mahinapua. It is a great ride through typical West Coast bush and wetlands.

We call into the West Coast Treetops walkway and cafe where you can walk amongst the treetops and get a birds eye view of the forest.

The final leg of the cycle ride follows a disused railway line with a number of distinctive wooden bridges and wild west coast coastal scenery, to your next and final stop, the gold mining, farming and forestry town of Ross.

From Ross we return you to Christchurch arriving between 5 and 6pm approximately.





The West Coast Wilderness Cycle Trail



what is included

Accommodation

Each night you will stay in comfortable hotel, motel, or bed and breakfast accommodation.

Rooms are double (one queen /king bed) or twin (2 separate beds)

If you have a preference for a twin room, please let us know when you make your booking.

All rooms have their own ensuite bathroom.

If you are a single traveller, you can nominate to share a room with another single of the same gender or pay an additional single supplement to secure a private room for the duration of the tour.

Food

You will enjoy great local cuisine; breakfasts and hearty packed lunches during the day, with restaurant meals in the evenings. If you have any dietary issues or food allergies, we are happy to cater for these, please advise the office of details when you make your booking. Alcohol is not included in the tour cost, but is available for purchase most nights.

Luggage

Tuatara Tours transports all your luggage for the duration of the tour.

Tour Kit Bag - Exclusive to Tuatara Tours

To ensure you get the very best out of your journey with the least of fuss, we provide you with a bag of useful goodies. This will be given to you at the start of your tour.

An experienced and fully qualified guide

All transport - support vehicle for the duration of the tour

Access and Concession fees paid to the Department of Conservation

NZ Goods and Service Tax (GST)

Safety and Risk Management

To ensure maximum safety for all, our guides are certified first aiders and fully qualified drivers. Tuatara Tours operate under a Safety and Risk Management Plan which is regularly audited and approved by a qualified and independent auditor.

what is not included

- bike hire
- pre and post tour accommodation
- alcoholic drinks
- personal expenses
- gratuities, tipping is not expected in NZ but gratefully received. It is at your discretion whether or not to reward for excellent service





The West Coast Wilderness Cycle Trail



Enjoy gentle cycling in a landscape rich in beauty, history and diversity.

4 Days, 3 Nights

Mild Grade

pre tour checklist

Please ensure you have the following items for your cycle tour.

- Waterproof rain jacket with hood
- Comfortable walking/riding shoes, we suggest lightweight walking shoes suitable for cycling
- Woollen (merino) or polypro thermals (top and bottom)
- Polar fleece jacket or top or woollen jumper
- Gloves-fleece or woollen or cycle gloves if you have them
- Warm hat
- Pair of shorts or longs (preferably quick-dry fabric, no jeans) or cycle shorts if you have them.
- Personal first aid items and any essential medications

The following are highly recommended

- Swimsuit and small towel
- Sun hat, sun glasses, sun block
- Pair of light shoes or sandals for the evenings
- Casual attire for the evenings
- Personal toiletries
- Insect repellent
- Camera
- Drink bottle (we supply you with a double wall insulated stainless steel water bottle, but you may wish to bring another as well)
- Torch or head torch

tuatara conservation

Tuatara Tours are proud to be actively involved in Tuatara Conservation.

Tuatara Tours has formally adopted "BP" a male juvenile tuatara who resides at Orana Park in Christchurch and is part of the conservation programme to ensure the safe future of these amazing reptiles.



If you are bringing along your own bike, you must ensure your bike has been fully serviced and is in a roadworthy and safe condition to ride. Please ensure you bring spare tyres and tubes as we only carry a basic stock for the bikes we hire out.

Please call the office on 0800 377 378 if you are unsure about your bike(s).

All our hire bikes come with a helmet, hi-vis safety garment and a very comfortable memory foam seat, you are welcome to bring your own helmet or gel seat cover if you prefer.





The West Coast Wilderness Cycle Trail



FAQ's - frequently asked questions

How do we book a tour? The deposit is \$300 per person to confirm your place and can be paid with a credit card through our website at <https://www.tuataratours.co.nz/make-a-payment/> (we accept Visa or Mastercard with no card surcharges) or by internet banking or bank transfer (New Zealand bank account holders only) to Tuatara Tours NZ Ltd account: 01 0797 0308837 00. Please use your surname or tour booking number as a reference when making a payment so we can identify it as yours.

When is the balance due? Your final balance is due 90 days prior to departure. We will email you a reminder when this is due. You are welcome to pay in instalments as long as your tour is paid in full by the due date. Please email us each time you make a payment so we can confirm receipt.

What if I need to cancel? Please see our Terms and conditions for our cancellation policy: <https://www.tuataratours.co.nz/terms-conditions/>. We do recommend you purchase travel insurance to cover you in the case that something unexpected happens and you cannot proceed with your tour.

How big are the groups? Normally we take a maximum of 12 people on a tour but are happy to cater to larger groups on request if you are planning to get a group together.

Do I have to share a room? The tours are priced on a twin share basis (2 people to a room), please let us know at the time of booking if you prefer a queen room (one queen bed) or a twin room (2 separate beds). If you are a solo traveller we will room you with another single person of the same gender, or you may wish to pay an additional single supplement to reserve a private room to yourself.

Am I fit enough? As a general guideline we suggest the following activity level guide for our tours:

Walking Tours:

Easy/Mild: An average level of fitness, you should be comfortable walking 12km on well-formed tracks and roads with a small amount of incline.

Moderate: An above average level of fitness, you should be comfortable walking 20km, on formed tracks and roads with some average to steep inclines at times.

Challenging: An above average level of fitness, you should be comfortable walking 20+ km, on partially formed tracks and roads, some steep inclines, some easy river and creek crossings.

Cycle Tours:

Previous cycling experience is necessary to comfortably complete a multi-day cycle tour.

Easy/Mild: An average level of fitness, you should be comfortable biking 25km on well-formed tracks and roads with a small amount of incline.

Moderate: An above average level of fitness, you should be comfortable biking 45km on formed tracks and roads with some average to steep inclines at times.

Challenging: An above average level of fitness, you should be comfortable biking 50+km on partially formed tracks and roads, some off-road, some steep inclines, some easy river and creek crossings.

If you have any concerns about your fitness level, or ability to complete a tour, please call our office staff and we can discuss this further with you.

Can you pick me up for the tour? Yes, if your tour starts in Nelson, Christchurch, Queenstown or Rotorua pickups and drop offs are available at most central city hotels and motels. Pick-ups are not possible at Airbnb properties or in residential suburbs. Please check with our office before you book accommodation if you are not sure about the location of your stay. If your tour departs from Picton we ask you to make your own way to the meeting point on the wharf for the tour departure.





The West Coast Wilderness Cycle Trail



FAQ's - frequently asked questions - continued

What's the best time to do a trip? New Zealand is known to have four seasons in a day. Rain can be expected at any time throughout the year, and we depart rain, or fine so you should always be prepared for sudden changes in weather or temperature and always have the appropriate gear with you. Gear lists are in our trip notes for each tour.

Spring (September-November) and Autumn (March-May) are generally cooler months for experiencing the outdoors with temperatures averaging 15-25 degrees during the day.

Summer (December-February) is usually warmer with averages of 20-30 degrees and has longer sunshine hours due to daylight saving. We typically see more activity on the trails over February, March and April so September to December can be a quieter time to travel if you prefer trails less busy.

Do I have breakfast on the first day or is this included? Your tour starts after we pick you up on the first day so please come having had breakfast. After this all meals on tour are included for you as per the trip inclusions in your itinerary.

What sort of food do you provide? We provide continental breakfasts, either café or packed lunches, and an evening meal either in-house at your accommodation, or dining out at a local restaurant. We can cater for vegetarian, vegan, gluten free and dairy free diets, and most food allergies, however these need to be advised at the time of booking.

Do you provide alcohol? No but this can be purchased each evening with your meal, or you are welcome to bring a small amount for your own personal consumption. BYO is not available when dining at licensed premises.

Do I need to come ready to walk or cycle? Yes, please come dressed ready to walk or cycle with your overnight bag packed ready for the transport. During the day you will not have access to your overnight bag so please make sure to have all the items you require for use during the day, packed in a day pack for easy access. For some of the tours there is a ride of up to several hours in the bus to get to your start location, if you are not comfortable travelling in full walk or cycle gear, please have this readily available to change into before the walk /ride starts.

Can I fly in/fly out the same day? Ideally, we recommend you arrive the day prior to your tour and depart the morning after the tour finishes just in case there are any unexpected delays or cancellations to your flights.

Can I bring my own bike for the cycle tours? Yes, please make sure it has been serviced and is fit for purpose for the trail you are undertaking. If you are not sure, please check with our office staff on booking.

What comes with the hire bikes? Our hire E bikes, and standard bikes all come with a comfortable memory foam saddle and a rack bag for carrying your jacket, phone, and a drink bottle. Helmets and hi-vis garments are issued with each bike, and as helmets are required by law in New Zealand, we ask riders to wear these at all times while riding. The support vehicle is never far away if you need access to other items of your clothing or equipment.

How much luggage can I bring on tour? Space is limited so we would appreciate if you could please keep your luggage to one hand carry and one overnight bag or suitcase max 20kg. For the Abel Tasman we provide a bag for you to pack into (please see trip notes for the Abel Tasman tours) and for Queen Charlotte tours please limit luggage to 15kg as there are restrictions on the size and weight of bags that can be transported on the water taxis. On some of the hiking tours you may be required to carry your own pack, this is specified in the packing list for your trip

Are all your tours guided?

Our walking tours, with the exception of the Queen Charlotte Boat stay tour, are all guided by a knowledgeable local guide, they provide information on the terrain you are passing through as well as logistical support.

On a cycle tour we provide a support vehicle and driver-guide throughout to help with any bike issues, first aid, trail instructions and to set up for meal breaks. On occasion they will bike a section of the trail with you to highlight places of interest or point out directions, but they do not guide the full trail. If anyone needs to take a break from the riding, you are welcome to make use of the vehicle at any stage.

If there is something we have not covered in these FAQ's please feel free to call **0800 377 378** or email our office team for further assistance.



The West Coast Wilderness Cycle Trail



Pre and Post Departure Accommodation Options - Christchurch

Each of the properties below can be booked directly with the host for the best rates.

On the morning of your tour, we will meet you at your accommodation. Please let us know where you have booked to stay and we will confirm the time for pickup with you. For some of the locations below, we may ask you to walk a short distance to the nearest bus stop for pickup as parking is not available directly in front of the property.

Please note: Pickups are not available at Airbnb properties or in residential suburbs, if you are not sure about your pre/post tour location please call or email us to check.

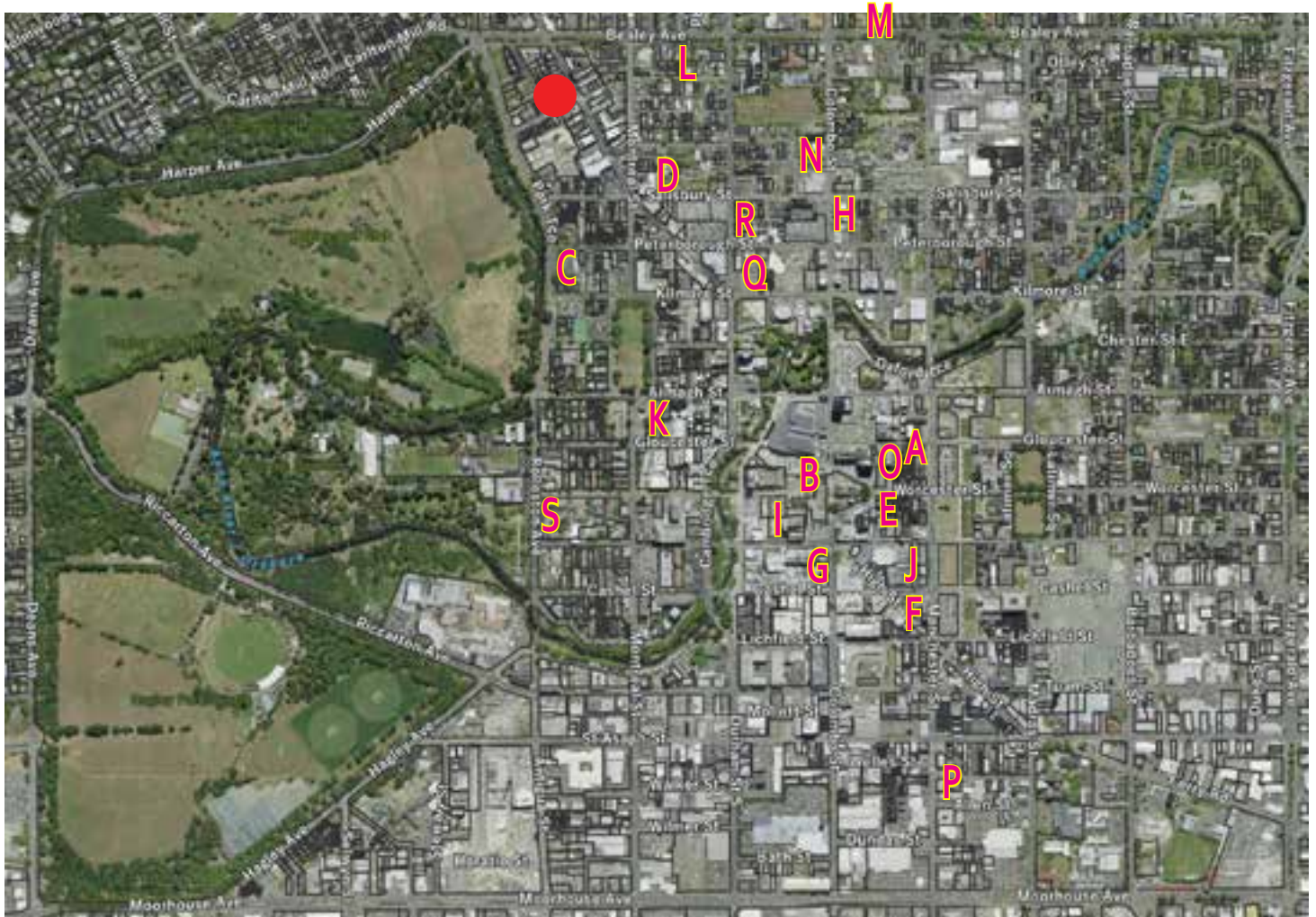
PROPERTY TYPE	WEBSITE	LOCATION
4-5-5 STAR HOTELS		
Fable Hotel	https://www.fablehotelsandresorts.com/hotels/fable-christchurch	166 Gloucester St-City Centre
Novotel	http://www.novotel.com/gb/city/hotels-christchurch-v5065.shtml	Cathedral Square-City Centre
George Hotel	https://www.thegeorge.com/	Park Terrace-10 min walk to city centre
Sudima Hotel	https://www.sudimahotels.com/en/our-hotels/christchurch-city/	Victoria and Salisbury Streets- 5 min walk to city centre
OGB Suites	https://www.ogbsuites.co.nz/	28 Cathedral Square-City Centre
Muse Art Hotel	https://themusehotel.co.nz/	159 Manchester St-City Centre
ECONOMY HOTELS	3STAR+	
Christchurch City Hotel	https://www.christchurchcityhotel.co.nz/about	699 Colombo Street-city centre
Carmmore Hotel	https://carmmorehotelchristchurch.co.nz/	Cnr Colombo and Salisbury Sts-5 min walk to city centre
Hotel Ibis	http://www.ibis.com/gb/hotel-5983-ibis-christchurch/index.shtml	107 Hereford Street-City Centre
Breakfree on Cashel	http://www.breakfreeoncashel.nz/	165 Cashel Street-City Centre
GUEST HOUSES B&B		
The Grange B&B	http://www.thegrange.co.nz/	56 Armagh Street-10-minute walk to city centre
MOTELS	SELF CATERING	
Tuscana Motel	http://www.tuscana.co.nz/	74 Bealey Ave- 15-minute walk to city centre
Bella Vista Motel	https://www.bellavista.co.nz/our-motels/christchurch	193 Bealey Ave-15-minute walk to city centre
Colombo in the City Motel	http://www.colombointhecity.co.nz/	863 Colombo Street-10-minute walk to city centre
Quest Apartments Cathedral Junction	https://www.questapartments.co.nz/properties/south-island/christchurch/quest-christchurch/overview	113 Worcester St-City Centre
Quest Manchester	https://www.questapartments.co.nz/properties/south-island/christchurch/quest-on-manchester/hotel-rooms	54 Manchester Street- City Centre
Fino Hotel and Suites	http://fino.nz/	87 Kilmore St-5 minute walk to city centre
Focus Motel	https://focusmotel.co.nz/	344 Durham St North-7 minute walk to city centre
BACKPACKERS		
Hotel Give- (part of YMCA Hereford St)	https://hotelgive.nz/	12 Hereford St-City Centre




The West Coast Wilderness Cycle Trail



Pre and Post Tour Accommodation Options in Christchurch



- | | | | |
|---|-------------------------|-------------------------------------------------------------------------------------|------------------------------------------|
| A | Fable Hotel | K | The Grange B&B |
| B | Novotel | L | Tuscana Motel |
| C | George Hotel | M | Bella Vista Motel |
| D | Sudima Hotel | N | Colombo in the City Motel |
| E | OGB Suites | O | Quest Apartments Cathedral Junction |
| F | Muse Art Hotel | P | Quest Manchester |
| G | Christchurch City Hotel | Q | Fino Hotel and Suites |
| H | Carmore Hotel | R | Focus Motel |
| I | Hotel Ibis | S | Hotel Give- (part of YMCA Hereford St) |
| J | Breakfree on Cashel | | |
| | |  | Tuatara Tours Office 122 Victoria Street |



Tuatara Tours NZ Ltd, PO Box 13544, Christchurch 8141, New Zealand
 Phone: New Zealand: 0800 377 378, Australia: 1 800 044 633, World: +64 3 962 3280
 Email: info@tuataratours.co.nz, Web: www.tuataratours.co.nz





The West Coast Wilderness Cycle Trail



Enjoy gentle cycling in a landscape rich in beauty, history and diversity.

4 Days, 3 Nights

Mild Grade

making an enquiry

Go to www.tuataratours.co.nz, click the make an enquiry button and submit your enquiry using the form provided.

We enjoy talking to people about their travel interests. So feel free to contact us directly if you'd rather not fill out a form.

- New Zealand: 0800 377 378
- Australia: 1 800 044 633
- World: +64 3 962 3280
- Email: info@tuataratours.co.nz
- Web: www.tuataratours.co.nz

custom tours

We Can Customise Existing Tours - You may want to spend an extra day or you may want to add an element to your tour!

We Can Design A New Tour Just For You.

We have years of experience in creating custom-made tours for groups, so if you are planning a tour for your friends, family, club, corporate workplace.... contact us now.



subscribe to our newsletter

Our newsletter will be emailed to you monthly on the first working day of every month.

- latest trips
- travel advice
- events & attractions
- and more!

Go to www.tuataratours.co.nz and go to the newsletter sign up in the footer of any page.



Tuatara Tours Hire Bikes



2024/25 West Coast Wilderness Cycle Trail Prices

Tuatara Tours HYBRID E-bikes are designed in New Zealand to be versatile and flexible so they can handle a range of New Zealand riding conditions. The lighter carbon fibre frame and powerful motor mean they are far superior to other similar e-bikes on hills where performance is critical.

Carbon Fibre Electric Bike

HYBRID F18 CRUISE ELITE SPECIAL

The F18 Cruise Elite Special is a very popular all-terrain model and is the perfect cross over between comfort cruiser and trail bike.

The F18's low step-through makes it ideal for riders of nearly all heights and abilities and will take you comfortably on all the cycle trails we tour on.



10 speed gearing
29 inch wheels
low bar.

Available in Small, Medium, Large
and X Large sizes
To be sure of getting the ride of your
lifetime please book early

\$110
per day
for 4 days

Carbon Fibre Electric Bike

HYBRID M18 SPORT ELITE SPECIAL

In all respects exactly the same as the F18 Cruise Elite Special except for having a bar and different handlebar profile. (more of a mountain bike style).



10 speed gearing
29 inch wheels
high bar

Available in Small, Medium, Large
and X Large sizes
To be sure of getting the ride of your
lifetime please book early

\$110
per day
for 4 days

All Bike Hire Prices Only Valid For The 2024/2025 Season

Luxury Bikes



Carbon Fibre - Full Suspension Electric Bike

HYBRID M24 ADVENTURE - 20AH/720WH BATTERY

\$165
per day
for 4 days

NEW! 2024

The full suspension carbon fibre M24 stands as the ultimate adventure all terrain commuter e-bike, designed for riders seeking unparalleled comfort. With a dropper seat, it ensures a comfortable commute across all terrain. The M24 offers a range of over 100km per charge, making it exceptionally practical for longer trail rides.

The M24 incorporates cutting-edge technology with the M510 motor, a 250-watt powerhouse. With an impressive torque of 95N/M and a featherweight design at just 2.8kg, it stands out as both incredibly powerful and lightweight. At the Euro Bike Show 2023, the M510 motor was recognized as one of the finest in its class, alongside esteemed competitors such as Bosch, Brose, and Shimano.

The Samsung INR21700-40T, Lithium-Ion High Capacity Cylindrical Battery is one of the best quality and most reliable 21700 cells on the market.



*Available in Medium and Large sizes
We have limited number of our HYBRID M24 ADVENTURE carbon fibre full suspension electric bikes for hire
These bikes are available on a first come first serve basis.
To be sure of getting the ride of your lifetime please book early*

Carbon Fibre - Full Suspension Electric Bike

HYBRID F24 DISCOVERY - 20AH/720WH BATTERY

\$165
per day
for 4 days

NEW! 2024

The F24 stands as the ultimate discovery all terrain commuter e-bike, designed for riders seeking unparalleled comfort. With a dropper seat, it accommodates riders ranging from 154cm to 190cm, ensuring a comfortable commute across all terrain.

Equipped with a large 720W/H battery, the F24 offers a range of over 100km per charge, making it exceptionally practical for longer trail rides. Its mega comfort Rockshoxair suspension allows riders to tailor the suspension to perform optimally for their individual preferences.

Featuring 29 x 2.1 medium-sized tires, the F24 is perfect for all-terrain riders, providing a safe and comfortable riding experience even within urban environments.

Hybrid Bikes incorporates cutting-edge technology with the M510 motor, a 250-watt powerhouse. With an impressive torque of 95N/M and a featherweight design at just 2.8kg, it stands out as both incredibly powerful and lightweight.



*Available in Medium and Large sizes
We have limited number of our HYBRID F24 DISCOVERY carbon fibre full suspension electric bikes for hire
These bikes are available on a first come first serve basis.
To be sure of getting the ride of your lifetime please book early*

All Bike Hire Prices Only Valid For The 2024/2025 Season

LUXURY BIKES continued.....



Carbon Fibre - Full Suspension Electric Bike

MERIDA 22 EONE SIXTY 10000K

NEW! 2024

The most inspiring and fun-packed e-bike ride yet, the 10K is the test and award-winning flagship of Merida. Loaded with top drawer components including XTR drivetrain, Fox Factory level suspension, carbon DT Swiss wheelset and powerful Shimano EP8 motor, the carbon/aluminium frame hosts the integrated high-capacity battery and features modern yet balanced e-enduro geometry.

Best e-bike in the world?

You don't have to take our word for it - come and try it.

A perfectly tuned MTB geometry, paired with a stiff and lightweight carbon front triangle and tough aluminium rear, seamlessly integrated battery and a mixed wheel size combo that delivers poise and confidence on the toughest trails.



\$190
per day
for 4 days

Available in
Medium and Extra Large sizes.
We have limited number of our
carbon fibre full suspension 22EONE SIXTY
10000 electric bikes for hire. These bikes are
available on a first come first serve basis.
To be sure of getting the ride of your lifetime please book early.

Carbon Fibre - Full Suspension Electric Bike

MERIDA - 22 EONE SIXTY 8000

NEW! 2024

The Merida eOne-Sixty 8000 Electric Mountain Bike is designed to bring the best of dual-suspension trail bikes and electric bikes to the same world. With perfectly-tuned MTB geometry, this bike is made for trail riding, but will also shine away from the enduro tracks, thanks to the comfortable geometry and more travel, it is also perfect as a capable alternative to a 'normal' mountain bike.

Jam-packed with amazing components, this bike features the high-quality Shimano STEPs EP6 drive unit and EP8 630 Wh battery.

With 85 Nm of torque, and specifically designed clearance, this bike will help you tackle the toughest of terrain, all thanks to the comfortable geometry of the tough and lightweight carbon/aluminium frame.



\$175
per day
for 4 days

Available in Small, Medium, Large and Extra Large sizes
We have limited number of our carbon fibre full suspension
22EONE SIXTY 8000 electric bikes for hire.
These bikes are available on a first come first serve basis.
To be sure of getting the ride of your lifetime please book early.

All Bike Hire Prices Only Valid For The 2024/2025 Season

Manual Bikes

Manual Mountain Bikes

WILDCAT TRAIL

Aluminum, Women's Specific Frame, 27.5" Wheels, Low Standover. 11 speed gearing.
Mid to low bar

\$57
per day
for 4 days



All of our manual bikes are equipped with a bike computer so you can keep track of your distance travelled and your speed.

BOBCAT TRAIL

The Bobcat Trail is a capable mountain bike with modern trail geometry.
Aluminum, Frame, 27.5" and 29" Wheels, low Standover. 11 speed gearing.

\$57
per day
for 4 days



All of our manual bikes are equipped with a bike computer so you can keep track of your distance travelled and your speed.

Manual bike pictures are indicative only. Some bikes are different in colour and appearance.

All manual bikes are suitable for the trails we ride.

All Bike Hire Prices Only Valid For The 2024/2025 Season

Electric Bike - Fully Equipped Child Carrier



HYBRID C24 CHILD CARRIER

NEW! 2024

The C24 is the epitome of an ideal child carrier commuter e-bike. Its very low step-through design makes it perfect for riders to easily keep an eye on their kids. Equipped with a dropper seat, it accommodates riders ranging from 152cm to 183cm, ensuring a comfortable ride.

Fully equipped with fenders, lights, and a rear carrier featuring a kids' safety rack for added security, the C24 is ready for most trails. With puncture-resistant tyres, riders are shielded against most obstacles that could cause flats. The 4-piston brakes provide optimal safety for stopping.

Featuring a large 720W/H battery, the C24 offers a range of over 100km per charge, making it exceptionally practical for any bike trail. With its combination of convenience, safety, and long-range capability, the C24 is the ultimate solution

FRAME — ALLOY

This alloy frame is exceptionally robust and engineered to support a total weight of 180kg, making it the epitome of this class of bikes. Its impressive load capacity ensures it can handle various hauling tasks with ease.

The well balanced weight distribution, coupled with a wheelbase of only 200cm, facilitates swift town rides and effortless tight turns. The low step through design enhances manoeuvrability, allowing riders to effortlessly turn around and keep a watchful eye on their children on the back.

BATTERY — The Samsung INR21700-40T, Lithium-Ion High Capacity Cylindrical Battery is one of the best quality and most reliable 21700 cells on the market.



MOTOR — 250 WATT BAFANG M510 Hybrid Bikes incorporates cutting-edge technology with the M510 motor, a 250-watt powerhouse. With an impressive torque of 95N/M and a featherweight design at just 2.8kg, it stands out as both incredibly powerful and lightweight.

**\$145
per day
for 4
days**

All Bike Hire Prices Only Valid For The 2024/2025 Season

All of our bikes have a bell, a bike stand, a carrier with a trunk bag where you can carry your personal gear whilst on the trail. In the carrier bag you will find a tyre pump and a bike lock. All of our bike seats are the very latest unisex design and made from memory foam which is more comfortable than a gel seat.



LARGE TRUNK BAG

This deluxe Bag is a large trunk bag which includes an expanding top section, large roll-out side panniers. Large 18 litre capacity.



COMFORT SEAT

New unisex maximum comfort memory foam seat.





The West Coast Wilderness Cycle Trail



TERMS & CONDITIONS

Tuatara Tours NZ Limited accepts bookings on the following tours, The Akaroa Walk, The Queen Charlotte Walk, The West Coast Trail, Around The Mountains Cycle Trail, The Alps 2 Ocean Cycle Trail, The West Coast Wilderness Cycle Trail, The Queenstown Cycle Trail, The Otago Rail Trail, Ladies Otago Rail Trail, Ladies West Coast Wilderness Cycle Trail, The Tasman Great Taste Trail and Golden Bay Explorer, The Best of the West Cycle Tour, Bhutan Tours, Japan Walking Tours subject to the following conditions: Terms and conditions for all other tours can be found on the tour brochure available to download on the relevant tour page of the Tuatara Tours website.

Contract

This contract is between Tuatara Tours and you the client being any person travelling or intending to travel on a tour supplied by Tuatara Tours as the operator. The contract, including all matters arising from it, is subject to New Zealand law and the exclusive jurisdiction of the New Zealand courts. Only Employees and Directors of Tuatara Tours have authority to vary or omit any of the terms.

Cancellation Policy due to travel restriction that is imposed by either the New Zealand government or any other government.

Should your trip be impacted by a travel restriction that is imposed by either the New Zealand government or any other government, we will either work with you to transfer your trip to a future date at no additional cost, or provide you with a full refund.

Price

The price is quoted in New Zealand dollars and includes GST of 15%. The price is based on prices at time of publishing and Tuatara Tours hereby reserves to modify without notice those prices in any way considered necessary or desirable.

Organised tour accommodations are based on a twin/double share accommodation. Individual travellers will be placed in rooms together with other individual travellers of the same sex. A single supplement is available on request.

Confirmation of Booking

Bookings are confirmed upon receipt of the full tour price which is payable 90 days prior to the commencement of the tour. Tuatara Tours or their agents reserve their right to decline any booking at their discretion.

Cancellation

If a client wishes to cancel a Tour the following charges will be applied: (Unless stated otherwise)

1. 91+ days prior to departure – no fee
2. 90-60 days prior to departure – NZD\$300.00 per person applies
3. 59-30 days prior to departure – 30% of total package cost applies
4. 29-0 days prior to departure – 100% of total package cost applies
5. After tour commencement – no refund available.

These cancellation fees are not negotiable, therefore we strongly recommend that you purchase travel insurance.

Travel Insurance

Tuatara Tours recommends that the client take out tour cancellation insurance together with all other necessary travel insurances. Obtaining all necessary insurances is the responsibility of you the client and Tuatara Tours can not held liable for any failure on your part to get insurance.

Medical conditions

When you book you must notify us of any medical condition, medical history or medication that you are on.

Changes to Tours

Tuatara Tours will use its best endeavours to ensure that all tours are operated as advertised. It may be that reasonable changes in the itinerary may need to be made where is deemed necessary or advisable by Tuatara Tours. Changes will be advised to the client as soon as is reasonably possible. Where a tour service needs to be changed, a substitute or similar quality or standard will be provided.

Weather

Adverse weather conditions may mean that planned activities cannot proceed as intended. A decision to change an advertised tour based on the weather conditions will be made by a tour guide at the time and is made in the best interest of the group and their safety. Tuatara Tours and or their contracted suppliers can not be held responsible to any changes as a result of the weather.

General conditions

Tuatara Tours, its agents, contractors and guides do not accept responsibility or liability for loss, damage to, or theft of personal belongings (owners risk) or for any expenses, including medical and transport expenses arising from a personal accident, injury, illness, or hospitalisation. Tuatara Tours and their guides reserve the right to make any alterations to the itinerary in the interest of safety, or unforeseen circumstances due to causes such as weather, illness or misadventure. Every reasonable endeavour will be made to keep to published schedules but no guarantee is given. Tuatara Tours will not be held liable for costs incurred by change, delay or the missing of connecting services. Tuatara Tours reserves the right to exclude a person from a tour at any time, if in the opinion of the guide or operator, that person may be likely to risk the health, safety or comfort (including unsociable behaviour) of other clients, him or herself or the environment. In such circumstances, Tuatara Tours will not be obliged to offer any refund or transfer ticket. These terms and conditions apply to each participant including in a group booking. Where a booking is made on behalf of a group or two or more people then each participant in the group must be made aware of and accept these terms and conditions.



The West Coast Wilderness Cycle Trail



RISK DISCLOSURE STATEMENT

In any adventure activity, there is an element of risk involved. Risks in undertaking this activity include (but are not limited to): hypothermia, heat exhaustion, physical injury caused by environment i.e. rock falls, and physical injury caused by self, i.e. falling over.

Tongariro National Park is an active volcanic area, and eruptions from any of the volcanoes can happen at any time. Early warning systems and alarms are in place that indicate times of increased volcanic activity, however events can occur without any warning.

The staff and management of TuataraTours and any of its agency partners take all practicable steps to identify and minimise potential dangers. The Operator makes all arrangements for all tours on the condition that it shall not be liable for any sickness, injury, damage, loss, accident, delay or irregularity which may be occasioned, either directly or indirectly, by reason of any defect in any vehicle, vessel or aircraft, by weather, by any other cause, or through acts of default of a company or person engaged in conveying the passengers, or in carrying out arrangements for these activities.

We strongly recommend that you purchase travel insurance prior to your trip. By participating in this activity, you are expressly assuming those risks and responsibilities and are, to the maximum extent permitted by law releasing the Operator, its officers, employees, directors, agents and any other person associated with us, from any liability, claims, loss, damages or expenses (whatsoever and irrespective of whether direct, indirect or consequential) caused by any event including but not limited to: personal injury or death; property loss or damage; acts which may be construed as negligible or accidental; any other loss, damage, suffering, emotional or nervous disorder suffered by you or any other person in relation to this activity. You accept that you have been advised to obtain adequate travel insurance for all persons named on the booking.

In participating in the activity, the customer agrees to be bound by the following conditions:

- My successors, executors and administrators are bound by the Terms and Conditions;
- I agree not to commence any litigation proceedings in any country in relation to the risks and liabilities set out above and to indemnify the Operator against any claims;
- I confirm and warrant I am physically fit and suffer no medical conditions, which may affect my ability to participate in the activity;
- I confirm I am aware that professional medical assistance may be difficult and/or take some time to access due to the remote areas in which we are travelling;
- I consent to receive medical treatment in the case of injury, accident or illness during the activity and to indemnify the Operator against any claims, costs or expenses in respect of the treatment;
- I agree that any film, sound, video or other recordings taken of or during the activity will not be used in any production, or advertising without prior consent of the Operator, however the Operator may use such recordings itself at its complete discretion without any prior approval; and
- I agree to listen to my driver/guide/host, follow their instructions and make sure any children in my care do the same. Furthermore, the Operator will not be responsible for any personal injury and/or property damage caused by you and any costs for such injury/damage will be your responsibility. You shall indemnify the Operator in relation to such costs.

NZ Walking Tours

The Akaroa Walk
The Queen Charlotte Walk
The West Coast Trail
The Hump Ridge Track Walk
The Coromandel Explorer Walk
The Tongariro Crossing Walk
The Waikaremoana Discovery
Great Barrier Island Escape
The Abel Tasman Walk - 3 Days
The Abel Tasman Walk - 5 Days
The Abel Tasman Walk/Kayak - 3 Days
The Abel Tasman Walk/Kayak - 5 Days
Bucket List Walk

NZ Cycling Tours

Around The Mountains Cycle Trail
The Alps 2 Ocean Cycle Trail
The West Coast Wilderness Cycle Trail
The Queenstown Cycle Trail
The Otago Rail Trail
The Tasman Great Taste Trail and
Golden Bay Explorer
The Best of the West Cycle Tour

Overseas Tours

Bhutan Tours
Japan Walking Tours

All of these tours and more available at
www.tuataratours.co.nz

