



# The Akaroa Walk



A Truly Unique and Exciting way to Explore Banks Peninsula and its Surrounds

4 Days, 3 Nights

Moderate Grade



## tour highlights

- Experience unique Banks Peninsula
- Unsurpassed hospitality
- Fantastic meals
- Soaring landscapes
- Ancient forests
- Great company
- Experienced attentive guide

## tour cost:

2025 / 2026

Low season **\$2195**  
November, December, January, April

High season **\$2395**  
February, March

## tours run

November - April Starting in Christchurch  
Custom Groups: Options are available for this tour

## options & supplements

Single Supplement:

NZD\$545



Tuatara Tours NZ Ltd, PO Box 13544, Christchurch 8141, New Zealand  
Phone: New Zealand: 0800 377 378, Australia: 1 800 044 633, World: +64 3 962 3280  
Email: info@tuataratours.co.nz, Web: www.tuataratours.co.nz





# The Akaroa Walk



A Truly Unique and Exciting way to Explore Banks Peninsula and its Surrounds

4 Days, 3 Nights

Moderate Grade

## the tour

*The Akaroa Walk* is a truly unique and exciting way to explore Banks Peninsula and its surrounds.

Spend time in paradise with native birds, plants and fabulous company, as well as huge panoramic landscapes that are unique to the area whilst completing your journey from Christchurch to Akaroa.

## at a glance

Day 1	Christchurch to Sumner	11km
Day 2	Sumner to Duvauchelle	16.5km
Day 3	Duvauchelle to Akaroa	11.5km
Day 4	Akaroa to Christchurch	



## trip grading

To determine the grade of a particular adventure we consider a number of factors. These include the condition of the terrain, the altitude, the number of pass crossings and the length of the trip.

*The Akaroa Walk* is graded moderate. An above average level of fitness, you should be comfortable walking 20 to 25km on formed tracks and roads with some average to steep inclines at times.

## about your guide

Our guides are very experienced, friendly walkers and bikers who love to share their knowledge of New Zealand's flora and fauna and local history.

They all hold current first aid certificates, passenger driving licences and are the very best people to ensure your experience will be one to remember.





# The Akaroa Walk



A Truly Unique and Exciting way to Explore Banks Peninsula and its Surrounds

4 Days, 3 Nights

Moderate Grade

## itinerary

Custom Groups: Options are available for this tour.

### Day 1 (Drive) Christchurch to the gondola (Walk) approximately 11km to Sumner

The Akaroa Walk begins with a walk briefing at gam at our office in central Christchurch where you meet fellow walkers and your friendly local guide, your companions for the next 3 days.

From the city, we drive to the foot of the Port Hills and take a Gondola ride to the top (the easy way up the hill). At 445 metres above sea level, the views from the top are breathtaking and give you a great opportunity to get some panoramic shots before the walking starts. Looking down into Lyttelton Harbour- Te Whakaraupō, the first of the 2 harbours we visit on the Akaroa Walk, it's easy to imagine the forces of nature at work that shaped this ancient volcanic cone. The first section of the Crater Rim Walkway takes us around the harbour rim, away from the gondola station and towards Mt Pleasant, with expansive views back over Christchurch city and down over Lyttelton.

From here is a short downhill to the historic WW2 gun emplacements, with views out to the head of the harbour and the Pacific Ocean. On reaching Evans Pass we pass through Rapanui Bush, a small remnant of native bush where you can often see fantails flitting among the trees.

We continue our descent along the Captain Thomas track, named in honour of Captain Thomas, the surveyor who chose the town sites of Lyttelton, Sumner and Christchurch and also laid out the street plans for the new Canterbury Settlement. We then arrive into Sumner Village, a pleasant seaside settlement on the outskirts of Christchurch and our location for the night.

There may be some time after our arrival to enjoy a stroll through the village, promenade along the beachfront or perhaps a swim or an ice cream before we head out to a local restaurant for dinner.

### Day 2 (Drive) Sumner to Western Valley Road (Walk 16.5km) to Duvauchelle

To start our day we circumnavigate Lyttelton Harbour in the vehicle, with a drive from Sumner, around the edge of the harbour to our trail head at Western Valley Road. The drive takes us through several small bays and coves popular with locals for water sports and summer picnics, and we pass by many holiday homes before climbing up Western Valley road to the Purau-Port Levy Saddle where today's walk starts.

Today you will cover a distance of 16.5kms. The track leads you up Mt Fitzgerald where you will experience unsurpassed panoramic views of the small, secluded bays of Banks Peninsula. From the summit you will follow undulating walkways to Mt Sinclair where the scenery continues to unfold below you. In particular, you will delight in seeing Port Levy, Pigeon Bay, Lake Forsyth and (in the distance) Kaitorete Spit. You will also get your first glimpse of Akaroa Harbour and the Onawe Peninsula.





# The Akaroa Walk



A Truly Unique and Exciting way to Explore Banks Peninsula and its Surrounds

4 Days, 3 Nights

Moderate Grade

## Day 3 Duvauchelle to Akaroa - 11.5km walking

After a transfer from Duvauchelle, along the Summit Road above Akaroa Harbour we take a short walk amongst the totara forest on the Otepatotu Reserve track to warm up your legs. From the Otepatotu Reserve its on to the old Le Bons Bay access track by which we descend into Takamatua and then walk to your accommodation in Akaroa via Childrens Bay. You should have time to enjoy the sights of Akaroa township for the remainder of the afternoon.

Tonight you will gather and celebrate the completion of the walk at one of Akaroa's best restaurants... where you will relax and reminisce about your successful trip across Banks Peninsula.

## Day 4 Akaroa to Christchurch - no walking today

This morning after breakfast at a local restaurant we drive you back to Christchurch arriving at approximately 12:30.



Tuatara Tours NZ Ltd, PO Box 13544, Christchurch 8141, New Zealand  
Phone: New Zealand: 0800 377 378, Australia: 1 800 044 633, World: +64 3 962 3280  
Email: info@tuataratours.co.nz, Web: www.tuataratours.co.nz







# The Akaroa Walk



A Truly Unique and Exciting way to Explore Banks Peninsula and its Surrounds

4 Days, 3 Nights

Moderate Grade

## what is included

### Accommodation

Each night you will stay in comfortable hotel, motel, or bed and breakfast accommodation.

Rooms are double (one queen /king bed) or twin ( 2 separate beds)

If you have a preference for a twin room, please let us know when you make your booking.

All rooms have their own ensuite bathroom.

If you are a single traveller, you can nominate to share a room with another single of the same gender or pay an additional single supplement to secure a private room for the duration of the tour.

### Food

You will enjoy great local cuisine; breakfasts and hearty packed lunches during the day, and dine out during the evenings. If you have any dietary issues or food allergies, we are happy to cater for these, please advise the office of details when you make your booking. Alcohol is not included in the tour cost, but is available for purchase most nights.

### Luggage

Tuatara Tours transports all your luggage for the duration of the tour.

### Tour Kit Bag - Exclusive to Tuatara Tours

To ensure you get the very best out of your journey with the least of fuss, we provide you with a bag of useful goodies. This will be given to you at the start of your tour.

### An experienced and fully qualified guide

### All transport - support vehicle for the duration of the tour

### Access and Concession fees paid to the Department of Conservation

### NZ Goods and Service Tax (GST)

### Safety and Risk Management

To ensure maximum safety for all, our guides are certified first aiders and fully qualified drivers. Tuatara Tours operate under a Safety and Risk Management Plan which is regularly audited and approved by a qualified and independent auditor.

## what is not included

- pre and post tour accommodation
- alcoholic drinks
- personal expenses
- gratuities, tipping is not expected in NZ but gratefully received. It is at your discretion whether or not to reward for excellent service





# The Akaroa Walk



A Truly Unique and Exciting way to Explore Banks Peninsula and its Surrounds

4 Days, 3 Nights

Moderate Grade

## pre tour checklist

Please ensure you have the following items for your walking tour.

- Medium size day pack with waterproof liner
- Boots or sturdy walking shoes, preferably with ankle support
- Waterproof rain jacket with hood
- Woollen (merino) or polypropylene thermals (top and bottom)
- Polar fleece jacket or top
- Warm hat and gloves-fleece or woollen
- Pair of shorts / long trousers (preferably quick-dry fabric, no jeans)
- Woollen or thermal socks-three or four pairs

## The following are highly recommended

- Walking poles (we have these available if you need them)
- Waterproof over trousers
- Gaiters
- Swimsuit
- Sun hat and sun glasses
- Spare boot laces
- Pair of light shoes or sandals for the evening
- A change of clothing for the evening
- Sunscreen, insect repellent
- Personal first aid items-including blister block or foot fleece
- Personal toiletries
- Camera
- Water bottle (we supply you with one bottle, but you may wish to bring another.)

## tuatara conservation

Tuatara Tours are proud to be actively involved in Tuatara Conservation.

Tuatara Tours has formally adopted "BP" a male juvenile tuatara who resides at Orana Park in Christchurch and is part of the conservation programme to ensure the safe future of these amazing reptiles.



We do not recommend you walk in cotton garments, jeans or silk. These fabrics take much longer to dry after perspiration or wet weather and you may feel damp and cold, even inside the best raincoat.

Plan around three layers of clothing, your inner or core layer which should be wool (merino) or polypropylene to trap warmth against the skin, a middle layer, and a top waterproof layer to protect from rain and wind.





# The Akaroa Walk



## FAQ's - frequently asked questions

**How do we book a tour?** The deposit is \$300 per person to confirm your place and can be paid with a credit card through our website at <https://www.tuataratours.co.nz/make-a-payment/> (we accept Visa or Mastercard with no card surcharges) or by internet banking or bank transfer (New Zealand bank account holders only) to Tuatara Tours NZ Ltd account: 01 0797 0308837 00. Please use your surname or tour booking number as a reference when making a payment so we can identify it as yours.

**When is the balance due?** Your final balance is due 90 days prior to departure. We will email you a reminder when this is due. You are welcome to pay in instalments as long as your tour is paid in full by the due date. Please email us each time you make a payment so we can confirm receipt.

**What if I need to cancel?** Please see our Terms and conditions for our cancellation policy: <https://www.tuataratours.co.nz/terms-conditions/>. We do recommend you purchase travel insurance to cover you in the case that something unexpected happens and you cannot proceed with your tour.

**How big are the groups?** Normally we take a maximum of 12 people on a tour but are happy to cater to larger groups on request if you are planning to get a group together.

**Do I have to share a room?** The tours are priced on a twin share basis (2 people to a room), please let us know at the time of booking if you prefer a queen room (one queen bed) or a twin room (2 separate beds). If you are a solo traveller we will room you with another single person of the same gender, or you may wish to pay an additional single supplement to reserve a private room to yourself.

**Am I fit enough?** As a general guideline we suggest the following activity level guide for our tours:

### Walking Tours:

Easy/Mild: An average level of fitness, you should be comfortable walking 12km on well-formed tracks and roads with a small amount of incline.

Moderate: An above average level of fitness, you should be comfortable walking 20km, on formed tracks and roads with some average to steep inclines at times.

Challenging: An above average level of fitness, you should be comfortable walking 20+ km, on partially formed tracks and roads, some steep inclines, some easy river and creek crossings.

### Cycle Tours:

Previous cycling experience is necessary to comfortably complete a multi-day cycle tour.

Easy/Mild: An average level of fitness, you should be comfortable biking 25km on well-formed tracks and roads with a small amount of incline.

Moderate: An above average level of fitness, you should be comfortable biking 45km on formed tracks and roads with some average to steep inclines at times.

Challenging: An above average level of fitness, you should be comfortable biking 50+km on partially formed tracks and roads, some off-road, some steep inclines, some easy river and creek crossings.

If you have any concerns about your fitness level, or ability to complete a tour, please call our office staff and we can discuss this further with you.

**Can you pick me up for the tour?** Yes, if your tour starts in Nelson, Christchurch, Queenstown or Rotorua pickups and drop offs are available at most central city hotels and motels. Pick-ups are not possible at Airbnb properties or in residential suburbs. Please check with our office before you book accommodation if you are not sure about the location of your stay. If your tour departs from Picton we ask you to make your own way to the meeting point on the wharf for the tour departure.





# The Akaroa Walk



## FAQ's - frequently asked questions - continued

**What's the best time to do a tour?** New Zealand is known to have four seasons in a day. Rain can be expected at any time throughout the year, and we depart rain, or fine so you should always be prepared for sudden changes in weather or temperature and always have the appropriate gear with you. Gear lists are in our trip notes for each tour.

Spring (September-November) and Autumn (March-May) are generally cooler months for experiencing the outdoors with temperatures averaging 15-25 degrees during the day.

Summer (December-February) is usually warmer with averages of 20-30 degrees and has longer sunshine hours due to daylight saving. We typically see more activity on the trails over February, March and April so September to December can be a quieter time to travel if you prefer trails less busy.

**Do I have breakfast on the first day or is this included?** Your tour starts after we pick you up on the first day so please come having had breakfast. After this all meals on tour are included for you as per the trip inclusions in your itinerary.

**What sort of food do you provide?** We provide continental breakfasts, either café or packed lunches, and an evening meal either in-house at your accommodation, or dining out at a local restaurant. We can cater for vegetarian, vegan, gluten free and dairy free diets, and most food allergies, however these need to be advised at the time of booking.

**Do you provide alcohol?** No but this can be purchased each evening with your meal, or you are welcome to bring a small amount for your own personal consumption. BYO is not available when dining at licensed premises.

**Do I need to come ready to walk or cycle?** Yes, please come dressed ready to walk or cycle with your overnight bag packed ready for the transport. During the day you will not have access to your overnight bag so please make sure to have all the items you require for use during the day, packed in a day pack for easy access. For some of the tours there is a ride of up to several hours in the bus to get to your start location, if you are not comfortable travelling in full walk or cycle gear, please have this readily available to change into before the walk /ride starts.

**Can I fly in/fly out the same day?** Ideally, we recommend you arrive the day prior to your tour and depart the morning after the tour finishes just in case there are any unexpected delays or cancellations to your flights.

**Can I bring my own bike for the cycle tours?** Yes, please make sure it has been serviced and is fit for purpose for the trail you are undertaking. If you are not sure, please check with our office staff on booking.

**What comes with the hire bikes?** Our hire E bikes, and standard bikes all come with a comfortable memory foam saddle and a rack bag for carrying your jacket, phone, and a drink bottle. Helmets and hi-vis garments are issued with each bike, and as helmets are required by law in New Zealand, we ask riders to wear these at all times while riding. The support vehicle is never far away if you need access to other items of your clothing or equipment.

**How much luggage can I bring on tour?** Space is limited so we would appreciate if you could please keep your luggage to one hand carry and one overnight bag or suitcase max 20kg. For the Abel Tasman we provide a bag for you to pack into (please see trip notes for the Abel Tasman tours) and for Queen Charlotte tours please limit luggage to 15kg as there are restrictions on the size and weight of bags that can be transported on the water taxis. On some of the hiking tours you may be required to carry your own pack, this is specified in the packing list for your tour

### **Are all your tours guided?**

Our walking tours, with the exception of the Queen Charlotte Boat stay tour, are all guided by a knowledgeable local guide, they provide information on the terrain you are passing through as well as logistical support.

On a cycle tour we provide a support vehicle and driver-guide throughout to help with any bike issues, first aid, trail instructions and to set up for meal breaks. On occasion they will bike a section of the trail with you to highlight places of interest or point out directions, but they do not guide the full trail. If anyone needs to take a break from the riding, you are welcome to make use of the vehicle at any stage.

If there is something we have not covered in these FAQ's please feel free to call **0800 377 378** or email our office team for further assistance.





# The Akaroa Walk



## making an enquiry

Go to [www.tuataratours.co.nz](http://www.tuataratours.co.nz), click the make an enquiry button and submit your enquiry using the form provided.

We enjoy talking to people about their travel interests. So feel free to contact us directly if you'd rather not fill out a form.

- New Zealand: 0800 377 378
- Australia: 1 800 044 633
- World: +64 3 962 3280
- Email: [info@tuataratours.co.nz](mailto:info@tuataratours.co.nz)
- Web: [www.tuataratours.co.nz](http://www.tuataratours.co.nz)

## custom tours

We Can Customise Existing Tours - You may want to spend an extra day or you may want to add an element to your tour!

We Can Design A New Tour Just For You.

We have years of experience in creating custom-made tours for groups, so if you are planning a tour for your friends, family, club, corporate workplace.... contact us now.



## subscribe to our newsletter

Our newsletter will be emailed to you monthly on the first working day of every month.

- latest trips
- travel advice
- events & attractions
- and more!

Go to [www.tuataratours.co.nz](http://www.tuataratours.co.nz) and go to the newsletter sign up in the footer of any page.





# The Akaroa Walk



## Pre and Post Departure Accommodation Options - Christchurch

Each of the properties below can be booked directly with the host for the best rates.

On the morning of your tour, we will meet you at your accommodation. Please let us know where you have booked to stay and we will confirm the time for pickup with you. For some of the locations below, we may ask you to walk a short distance to the nearest bus stop for pickup as parking is not available directly in front of the property.

Please note: Pickups are not available at Airbnb properties or in residential suburbs, if you are not sure about your pre/post tour location please call or email us to check.

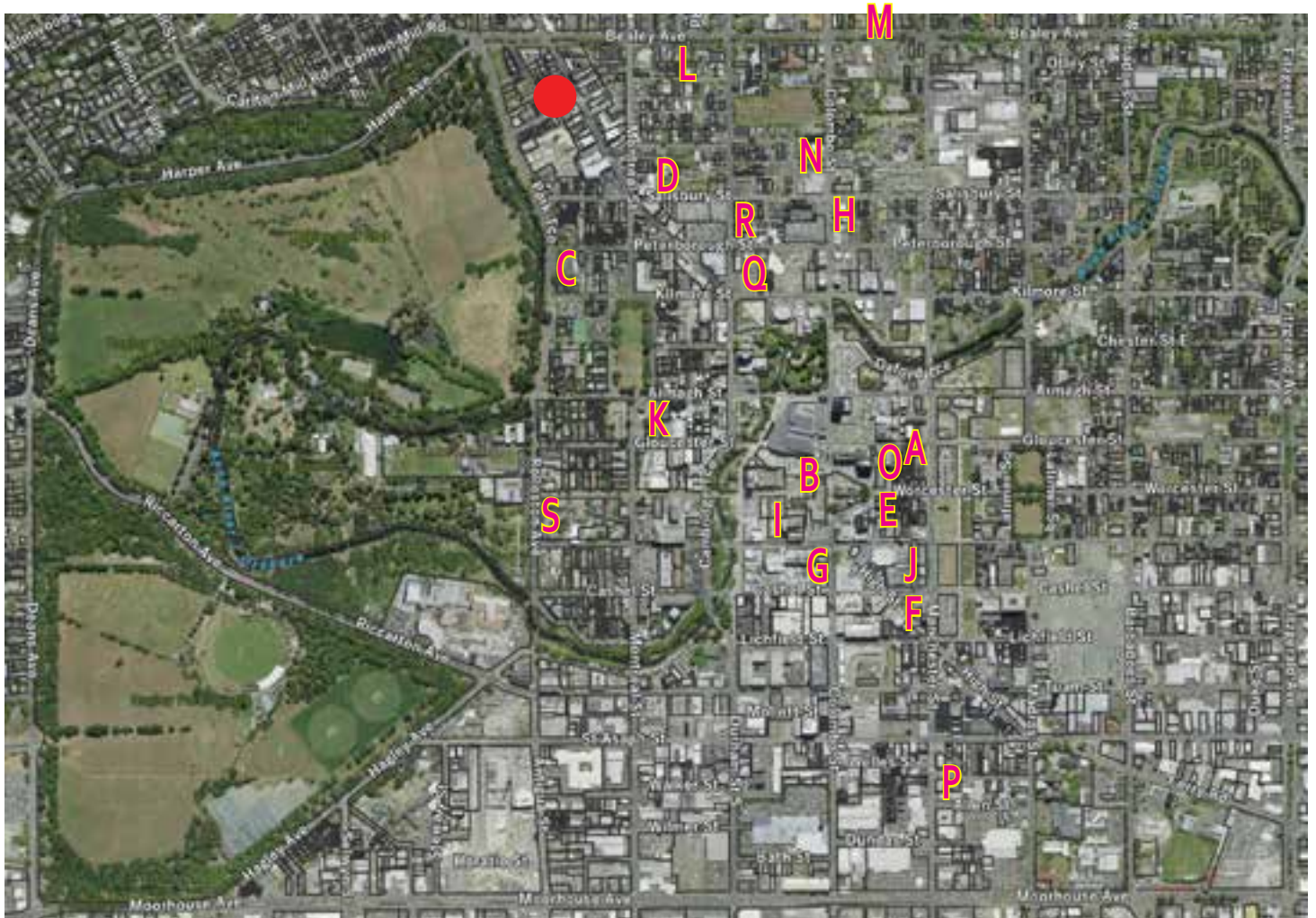
PROPERTY TYPE	WEBSITE	LOCATION
<b>4-5-5 STAR HOTELS</b>		
Fable Hotel	<a href="https://www.fablehotelsandresorts.com/hotels/fable-christchurch">https://www.fablehotelsandresorts.com/hotels/fable-christchurch</a>	166 Gloucester St-City Centre
Novotel	<a href="http://www.novotel.com/gb/city/hotels-christchurch-v5065.shtml">http://www.novotel.com/gb/city/hotels-christchurch-v5065.shtml</a>	Cathedral Square-City Centre
George Hotel	<a href="https://www.thegeorge.com/">https://www.thegeorge.com/</a>	Park Terrace-10 min walk to city centre
Sudima Hotel	<a href="https://www.sudimahotels.com/en/our-hotels/christchurch-city/">https://www.sudimahotels.com/en/our-hotels/christchurch-city/</a>	Victoria and Salisbury Streets- 5 min walk to city centre
OGB Suites	<a href="https://www.ogbsuites.co.nz/">https://www.ogbsuites.co.nz/</a>	28 Cathedral Square-City Centre
Muse Art Hotel	<a href="https://themusehotel.co.nz/">https://themusehotel.co.nz/</a>	159 Manchester St-City Centre
<b>ECONOMY HOTELS</b>	<b>3STAR+</b>	
Christchurch City Hotel	<a href="https://www.christchurchcityhotel.co.nz/about">https://www.christchurchcityhotel.co.nz/about</a>	699 Colombo Street-city centre
Carnmore Hotel	<a href="https://carnmorehotelchristchurch.co.nz/">https://carnmorehotelchristchurch.co.nz/</a>	Cnr Colombo and Salisbury Sts-5 min walk to city centre
Hotel Ibis	<a href="http://www.ibis.com/gb/hotel-5983-ibis-christchurch/index.shtml">http://www.ibis.com/gb/hotel-5983-ibis-christchurch/index.shtml</a>	107 Hereford Street-City Centre
Breakfree on Cashel	<a href="http://www.breakfreeoncashel.nz/">http://www.breakfreeoncashel.nz/</a>	165 Cashel Street-City Centre
<b>GUEST HOUSES B&amp;B</b>		
The Grange B&B	<a href="http://www.thegrange.co.nz/">http://www.thegrange.co.nz/</a>	56 Armagh Street-10-minute walk to city centre
<b>MOTELS</b>	<b>SELF CATERING</b>	
Tuscana Motel	<a href="http://www.tuscana.co.nz/">http://www.tuscana.co.nz/</a>	74 Bealey Ave- 15-minute walk to city centre
Bella Vista Motel	<a href="https://www.bellavista.co.nz/our-motels/christchurch">https://www.bellavista.co.nz/our-motels/christchurch</a>	193 Bealey Ave-15-minute walk to city centre
Colombo in the City Motel	<a href="http://www.colombointhecity.co.nz/">http://www.colombointhecity.co.nz/</a>	863 Colombo Street-10-minute walk to city centre
Quest Apartments Cathedral Junction	<a href="https://www.questapartments.co.nz/properties/south-island/christchurch/quest-christchurch/overview">https://www.questapartments.co.nz/properties/south-island/christchurch/quest-christchurch/overview</a>	113 Worcester St-City Centre
Quest Manchester	<a href="https://www.questapartments.co.nz/properties/south-island/christchurch/quest-on-manchester/hotel-rooms">https://www.questapartments.co.nz/properties/south-island/christchurch/quest-on-manchester/hotel-rooms</a>	54 Manchester Street- City Centre
Fino Hotel and Suites	<a href="http://fino.nz/">http://fino.nz/</a>	87 Kilmore St-5 minute walk to city centre
Focus Motel	<a href="https://focusmotel.co.nz/">https://focusmotel.co.nz/</a>	344 Durham St North-7 minute walk to city centre
<b>BACKPACKERS</b>		
Hotel Give- (part of YMCA Hereford St)	<a href="https://hotelgive.nz/">https://hotelgive.nz/</a>	12 Hereford St-City Centre



# The Akaroa Walk



## Pre and Post Tour Accommodation Options in Christchurch



- |   |                         |   |  |
|---|-------------------------|---|--|
| A | Fable Hotel             | K | The Grange B&B                           |
| B | Novotel                 | L | Tuscana Motel                            |
| C | George Hotel            | M | Bella Vista Motel                        |
| D | Sudima Hotel            | N | Colombo in the City Motel                |
| E | OGB Suites              | O | Quest Apartments Cathedral Junction      |
| F | Muse Art Hotel          | P | Quest Manchester                         |
| G | Christchurch City Hotel | Q | Fino Hotel and Suites                    |
| H | Carmore Hotel           | R | Focus Motel                              |
| I | Hotel Ibis              | S | Hotel Give- (part of YMCA Hereford St)   |
| J | Breakfree on Cashel     |   |  |
|   |                         | ● | Tuatara Tours Office 122 Victoria Street |



Tuatara Tours NZ Ltd, PO Box 13544, Christchurch 8141, New Zealand  
 Phone: New Zealand: 0800 377 378, Australia: 1 800 044 633, World: +64 3 962 3280  
 Email: info@tuataratours.co.nz, Web: www.tuataratours.co.nz







# The Akaroa Walk



## TERMS & CONDITIONS

Tuatara Tours NZ Limited accepts bookings on the following tours, The Akaroa Walk, The Queen Charlotte Walk, The West Coast Trail, Around The Mountains Cycle Trail, The Alps 2 Ocean Cycle Trail, The West Coast Wilderness Cycle Trail, The Queenstown Cycle Trail, The Otago Rail Trail, Ladies Otago Rail Trail, Ladies West Coast Wilderness Cycle Trail, The Tasman Great Taste Trail and Golden Bay Explorer, The Best of the West Cycle Tour, Bhutan Tours, Japan Walking Tours subject to the following conditions: Terms and conditions for all other tours can be found on the tour brochure available to download on the relevant tour page of the Tuatara Tours website.

### Contract

This contract is between Tuatara Tours and you the client being any person travelling or intending to travel on a tour supplied by Tuatara Tours as the operator. The contract, including all matters arising from it, is subject to New Zealand law and the exclusive jurisdiction of the New Zealand courts. Only Employees and Directors of Tuatara Tours have authority to vary or omit any of the terms.

Cancellation Policy due to travel restriction that is imposed by either the New Zealand government or any other government.

Should your trip be impacted by a travel restriction that is imposed by either the New Zealand government or any other government, we will either work with you to transfer your trip to a future date at no additional cost, or provide you with a full refund.

### Price

The price is quoted in New Zealand dollars and includes GST of 15%. The price is based on prices at time of publishing and Tuatara Tours hereby reserves to modify without notice those prices in any way considered necessary or desirable.

Organised tour accommodations are based on a twin/double share accommodation. Individual travellers will be placed in rooms together with other individual travellers of the same sex. A single supplement is available on request.

### Confirmation of Booking

Bookings are confirmed upon receipt of the full tour price which is payable 90 days prior to the commencement of the tour. Tuatara Tours or their agents reserve their right to decline any booking at their discretion.

### Cancellation

If a client wishes to cancel a Tour the following charges will be applied: (Unless stated otherwise)

1. 91+ days prior to departure – no fee
2. 90-60 days prior to departure – NZD\$300.00 per person applies
3. 59-30 days prior to departure – 30% of total package cost applies
4. 29-0 days prior to departure – 100% of total package cost applies
5. After tour commencement – no refund available.

These cancellation fees are not negotiable, therefore we strongly recommend that you purchase travel insurance.

### Travel Insurance

Tuatara Tours recommends that the client take out tour cancellation insurance together with all other necessary travel insurances. Obtaining all necessary insurances is the responsibility of you the client and Tuatara Tours can not held liable for any failure on your part to get insurance.

### Medical conditions

When you book you must notify us of any medical condition, medical history or medication that you are on.

### Changes to Tours

Tuatara Tours will use its best endeavours to ensure that all tours are operated as advertised. It may be that reasonable changes in the itinerary may need to be made where is deemed necessary or advisable by Tuatara Tours. Changes will be advised to the client as soon as is reasonably possible. Where a tour service needs to be changed, a substitute or similar quality or standard will be provided.

### Weather

Adverse weather conditions may mean that planned activities cannot proceed as intended. A decision to change an advertised tour based on the weather conditions will be made by a tour guide at the time and is made in the best interest of the group and their safety. Tuatara Tours and or their contracted suppliers can not be held responsible to any changes as a result of the weather.

### General conditions

Tuatara Tours, its agents, contractors and guides do not accept responsibility or liability for loss, damage to, or theft of personal belongings (owners risk) or for any expenses, including medical and transport expenses arising from a personal accident, injury, illness, or hospitalisation. Tuatara Tours and their guides reserve the right to make any alterations to the itinerary in the interest of safety, or unforeseen circumstances due to causes such as weather, illness or misadventure. Every reasonable endeavour will be made to keep to published schedules but no guarantee is given. Tuatara Tours will not be held liable for costs incurred by change, delay or the missing of connecting services. Tuatara Tours reserves the right to exclude a person from a tour at any time, if in the opinion of the guide or operator, that person may be likely to risk the health, safety or comfort (including unsociable behaviour) of other clients, him or herself or the environment. In such circumstances, Tuatara Tours will not be obliged to offer any refund or transfer ticket. These terms and conditions apply to each participant including in a group booking. Where a booking is made on behalf of a group or two or more people then each participant in the group must be made aware of and accept these terms and conditions.





# The Akaroa Walk



## RISK DISCLOSURE STATEMENT

In any adventure activity, there is an element of risk involved. Risks in undertaking this activity include (but are not limited to): hypothermia, heat exhaustion, physical injury caused by environment i.e. rock falls, and physical injury caused by self, i.e. falling over.

Tongariro National Park is an active volcanic area, and eruptions from any of the volcanoes can happen at any time. Early warning systems and alarms are in place that indicate times of increased volcanic activity, however events can occur without any warning.

The staff and management of TuataraTours and any of its agency partners take all practicable steps to identify and minimise potential dangers. The Operator makes all arrangements for all tours on the condition that it shall not be liable for any sickness, injury, damage, loss, accident, delay or irregularity which may be occasioned, either directly or indirectly, by reason of any defect in any vehicle, vessel or aircraft, by weather, by any other cause, or through acts of default of a company or person engaged in conveying the passengers, or in carrying out arrangements for these activities.

We strongly recommend that you purchase travel insurance prior to your trip. By participating in this activity, you are expressly assuming those risks and responsibilities and are, to the maximum extent permitted by law releasing the Operator, its officers, employees, directors, agents and any other person associated with us, from any liability, claims, loss, damages or expenses (whatsoever and irrespective of whether direct, indirect or consequential) caused by any event including but not limited to: personal injury or death; property loss or damage; acts which may be construed as negligible or accidental; any other loss, damage, suffering, emotional or nervous disorder suffered by you or any other person in relation to this activity. You accept that you have been advised to obtain adequate travel insurance for all persons named on the booking.

In participating in the activity, the customer agrees to be bound by the following conditions:

- My successors, executors and administrators are bound by the Terms and Conditions;
- I agree not to commence any litigation proceedings in any country in relation to the risks and liabilities set out above and to indemnify the Operator against any claims;
- I confirm and warrant I am physically fit and suffer no medical conditions, which may affect my ability to participate in the activity;
- I confirm I am aware that professional medical assistance may be difficult and/or take some time to access due to the remote areas in which we are travelling;
- I consent to receive medical treatment in the case of injury, accident or illness during the activity and to indemnify the Operator against any claims, costs or expenses in respect of the treatment;
- I agree that any film, sound, video or other recordings taken of or during the activity will not be used in any production, or advertising without prior consent of the Operator, however the Operator may use such recordings itself at its complete discretion without any prior approval; and
- I agree to listen to my driver/guide/host, follow their instructions and make sure any children in my care do the same. Furthermore, the Operator will not be responsible for any personal injury and/or property damage caused by you and any costs for such injury/damage will be your responsibility. You shall indemnify the Operator in relation to such costs.

## NZ Walking Tours

The Akaroa Walk  
The Queen Charlotte Walk  
The West Coast Trail  
The Hump Ridge Track Walk  
The Coromandel Explorer Walk  
The Tongariro Crossing Walk  
The Waikaremoana Discovery  
Great Barrier Island Escape  
The Abel Tasman Walk - 3 Days  
The Abel Tasman Walk - 5 Days  
The Abel Tasman Walk/Kayak - 3 Days  
The Abel Tasman Walk/Kayak - 5 Days  
Bucket List Walk

## NZ Cycling Tours

Around The Mountains Cycle Trail  
The Alps 2 Ocean Cycle Trail  
The West Coast Wilderness Cycle Trail  
The Queenstown Cycle Trail  
The Otago Rail Trail  
The Tasman Great Taste Trail and Golden Bay Explorer  
The Best of the West Cycle Tour

## Overseas Tours

Bhutan Tours  
Japan Walking Tours

All of these tours and more available at  
[www.tuataratours.co.nz](http://www.tuataratours.co.nz)

