



The West Coast Trail



Immerse yourself in the natural beauty and history of the famous West Coast

4 Days, 3 Nights

Easy Grade



tour highlights

- Rugged and dramatic landscapes
- Tussock lands
- Alpine panoramas
- Ancient forests
- Experienced attentive guide

tours run

November - April
Starting in Christchurch

tour cost:

2024 / 2025

Low season **\$1995**
November, December, January, April

High season **\$2195**
February, March

options & supplements

Single Supplement:

NZD\$545



Tuatara Tours NZ Ltd, PO Box 13544, Christchurch 8141, New Zealand
Phone: New Zealand: 0800 377 378, Australia: 1 800 044 633, World: +64 3 962 3280
Email: info@tuataratours.co.nz, Web: www.tuataratours.co.nz





The West Coast Trail



Immerse yourself in the natural beauty and history of the famous West Coast

4 Days, 3 Nights

Easy Grade

the tour

The West Coast Trail is a walking adventure that departs from Christchurch and takes you on a discovery of the alpine pass area through to the Wild West Coast of New Zealand. With four days of unique West Coast walks, you experience a diverse range of rugged and dramatic landscapes including tussock lands, alpine bush, West Coast native rainforest and sub-tropical bush.

You will be able to immerse yourself in the natural beauty and history of the famous West Coast of the South Island of New Zealand.

at a glance

Day 1	Christchurch to Arthurs Pass	max 7km
Day 2	Arthurs Pass to Greymouth	max 10km
Day 3	Greymouth to Punakaiki	max 10km
Day 4	Punakaiki to Christchurch	max 11km



trip grading

To determine the grade of a particular adventure we consider a number of factors. These include the condition of the terrain, the altitude, the number of pass crossings and the length of the trip.

The West Coast Trail is graded easy. An average level of fitness, you should be comfortable walking 10 to 15km on well-formed tracks and roads with very little incline.

about your guides

Our guides are very experienced, friendly walkers and bikers who love to share their knowledge of New Zealand's flora and fauna and local history.

They all hold current first aid certificates, passenger driving licences and are the very best people to ensure your experience will be one to remember.



Tuatara Tours NZ Ltd, PO Box 13544, Christchurch 8141, New Zealand
 Phone: New Zealand: 0800 377 378, Australia: 1 800 044 633, World: +64 3 962 3280
 Email: info@tuataratours.co.nz, Web: www.tuataratours.co.nz





The West Coast Trail



Immerse yourself in the natural beauty and history of the famous West Coast

4 Days, 3 Nights

Easy Grade

itinerary

Custom Groups: Options are available for this tour.

Day 1 Christchurch to Arthurs Pass - varied distance walked (max 7km)

You depart between 8:00 and 9am from Christchurch and travel along the Great Alpine Highway to Castle Hill where you walk amidst the distinctive limestone rock formations.

From here you travel to Arthurs Pass where we visit the Department of Conservation Visitor Centre and learn all about the history of this fascinating area before you undertake a local walk around the village where the history of the settlement will be experienced.

After the historical village walk you will then walk to Punchbowl Falls. There are a lot of steps on this walk so please be aware that it can be quite taxing on joints.

After completion of the Punchbowl Walk the rest of the afternoon is free time.

Tonight you dine in Arthurs Pass after which you retire to your comfortable motel in Arthurs Pass.

Day 2 Arthurs Pass to Greymouth - varied distance walked (max 10km)

After breakfast you will begin your walk along the Bealey Track in Arthur's Pass where you will be guided up the Bealey River to the base of Mt Rolleston. The group will stop to enjoy the scenery and a picnic lunch together.

The Dobson Nature Walk is the next experience along the trail. You will pass through colourful alpine vegetation, tussock, and wetlands while enjoying the view of mountains and valleys towering in the distance.

You will then explore some of the old goldmining relics on the Goldsborough Track near Kumara. This historic walk takes you through a wonderful array of West Coast ferns, with some of the best remaining examples of hill country rimu and miro. You can try your hand at gold panning.

You are then guided along the Tunnel Loop Walk where you will see an outstanding display of hand dug goldminers' tunnels.

Tonight, enjoy the best of West Coast hospitality, with a relaxing evening at your accommodation.





The West Coast Trail



Immerse yourself in the natural beauty and history of the famous West Coast

4 Days, 3 Nights

Easy Grade

itinerary continued

Custom Groups: Options are available for this tour.

Day 3 Greymouth to Punakaiki - varied distance (max 10km)

Your day begins by exploring the 'Jewel of the West Coast', the Punakaiki Pancake Rocks and blowholes. You will walk around these spectacular limestone formations that were created over 30 million years ago. The timing of this walk will coincide with high tide so that you can see the huge water spouts that blast from the crevices in the rocks, a truly spectacular and breathtaking sight.

The Truman Track is the next stop on the trail. You will be guided through lush coastal rainforest and capture fantastic views of the coastline.

You will spend your final night on the coast tonight with a group dinner, either at your hotel or in a local restaurant.

Day 4 Punakaiki, Greymouth to Christchurch - varied distance (max 11km)

Your adventure continues this morning, after breakfast, with the Pororari River Walk, where you will experience spectacular West Coast native rainforest and broad limestone canyons, while walking alongside the lovely Pororari River. The track passes through dense sub-tropical forest of coastal broadleaf, tree ferns and towering rata.

Your West Coast Trail walking experience ends at mid-day in Greymouth leaving you with a number of additional options:

Return to Christchurch by:

The TranzAlpine Railway - rated 'one of the top 6 train rides in the world' and highly recommended by Tuatara Tours. From your carriage you will enjoy stunning views of farmland, gorges, river valleys, lush beech forests and the Southern Alps. (4 hours) (additional cost)

or

Tuatara Tours Coach (4 hours)(no additional cost)

Come biking with us: This tour connects with our West Coast Wilderness Cycle trail departures.

Ask our team for details.

If you wish to continue your stay in the West Coast region or explore another area of the South Island there are hire car facilities in nearby Greymouth.





The West Coast Trail



Immerse yourself in the natural beauty and history of the famous West Coast

4 Days, 3 Nights

Easy Grade

what is included

Accommodation

Each night you will stay in comfortable hotel, motel, or bed and breakfast accommodation.

Rooms are double (one queen /king bed) or twin (2 separate beds)

If you have a preference for a twin room, please let us know when you make your booking.

All rooms have their own ensuite bathroom.

If you are a single traveller, you can nominate to share a room with another single of the same gender or pay an additional single supplement to secure a private room for the duration of the tour.

Food

You will enjoy great local cuisine; continental breakfasts and hearty packed lunches during the day, and restaurant meals in the evenings. If you have any dietary issues or food allergies, we are happy to cater for these, please advise the office of details when you make your booking. Alcohol is not included in the tour cost, but is available for purchase most nights.

Luggage

Tuatara Tours transports all your luggage for the duration of the tour.

Tour Kit Bag - Exclusive to Tuatara Tours

To ensure you get the very best out of your journey with the least of fuss, we provide you with a bag of useful goodies. This will be given to you at the start of your tour.

An experienced and fully qualified guide

All transport - support vehicle for the duration of the tour

Access and Concession fees paid to the Department of Conservation

NZ Goods and Service Tax (GST)

Safety and Risk Management

To ensure maximum safety for all, our guides are certified first aiders and fully qualified drivers. Tuatara Tours operate under a Safety and Risk Management Plan which is regularly audited and approved by a qualified and independent auditor.

what is not included

- pre and post tour accommodation
- alcoholic drinks
- personal expenses
- gratuities, tipping is not expected in NZ but gratefully received. It is at your discretion whether or not to reward for excellent service



Tuatara Tours NZ Ltd, PO Box 13544, Christchurch 8141, New Zealand
Phone: New Zealand: 0800 377 378, Australia: 1 800 044 633, World: +64 3 962 3280
Email: info@tuataratours.co.nz, Web: www.tuataratours.co.nz





The West Coast Trail



Immerse yourself in the natural beauty and history of the famous West Coast

4 Days, 3 Nights

Easy Grade

pre tour checklist

Please ensure you have the following items for your walking tour.

- Medium size day pack with waterproof liner
- Boots or sturdy walking shoes, preferably with ankle support
- Waterproof rain jacket with hood
- Woollen (merino) or polypropylene thermals (top and bottom)
- Polar fleece jacket or top
- Warm hat and gloves-fleece or woollen
- Pair of shorts / long trousers (preferably quick-dry fabric, no jeans)
- Woollen or thermal socks-three or four pairs

The following are highly recommended

- Walking poles (we have these available if you need them)
- Waterproof over trousers
- Gaiters
- Swimsuit
- Sun hat and sun glasses
- Spare boot laces
- Pair of light shoes or sandals for the evening
- A change of clothing for the evening
- Sunscreen, insect repellent
- Personal first aid items-including blister block or foot fleece
- Personal toiletries
- Camera
- Water bottle (we supply you with one bottle, but you may wish to bring another.)

tuatara conservation

Tuatara Tours are proud to be actively involved in Tuatara Conservation.

Tuatara Tours has formally adopted "BP" a male juvenile tuatara who resides at Orana Park in Christchurch and is part of the conservation programme to ensure the safe future of these amazing reptiles.



We do not recommend you walk in cotton garments, jeans or silk. These fabrics take much longer to dry after perspiration or wet weather and you may feel damp and cold, even inside the best raincoat.

Plan around three layers of clothing, your inner or core layer which should be wool (merino) or polypropylene to trap warmth against the skin, a middle layer, and a top waterproof layer to protect from rain and wind.

Please keep your overnight bag to approximately 15kg's, bag space can be limited on the water taxis and large heavy bags may be refused. If you have extra luggage, please arrange to leave this with your accommodation providers pre tour.





The West Coast Trail



FAQ's - frequently asked questions

How do we book a tour? The deposit is \$300 per person to confirm your place and can be paid with a credit card through our website at <https://www.tuataratours.co.nz/make-a-payment/> (we accept Visa or Mastercard with no card surcharges) or by internet banking or bank transfer (New Zealand bank account holders only) to Tuatara Tours NZ Ltd account: 01 0797 0308837 00. Please use your surname or tour booking number as a reference when making a payment so we can identify it as yours.

When is the balance due? Your final balance is due 90 days prior to departure. We will email you a reminder when this is due. You are welcome to pay in instalments as long as your tour is paid in full by the due date. Please email us each time you make a payment so we can confirm receipt.

What if I need to cancel? Please see our Terms and conditions for our cancellation policy: <https://www.tuataratours.co.nz/terms-conditions/>. We do recommend you purchase travel insurance to cover you in the case that something unexpected happens and you cannot proceed with your tour.

How big are the groups? Normally we take a maximum of 12 people on a tour but are happy to cater to larger groups on request if you are planning to get a group together.

Do I have to share a room? The tours are priced on a twin share basis (2 people to a room), please let us know at the time of booking if you prefer a queen room (one queen bed) or a twin room (2 separate beds). If you are a solo traveller we will room you with another single person of the same gender, or you may wish to pay an additional single supplement to reserve a private room to yourself.

Am I fit enough? As a general guideline we suggest the following activity level guide for our tours:

Walking Tours:

Easy/Mild: An average level of fitness, you should be comfortable walking 12km on well-formed tracks and roads with a small amount of incline.

Moderate: An above average level of fitness, you should be comfortable walking 20km, on formed tracks and roads with some average to steep inclines at times.

Challenging: An above average level of fitness, you should be comfortable walking 20+ km, on partially formed tracks and roads, some steep inclines, some easy river and creek crossings.

Cycle Tours:

Previous cycling experience is necessary to comfortably complete a multi-day cycle tour.

Easy/Mild: An average level of fitness, you should be comfortable biking 25km on well-formed tracks and roads with a small amount of incline.

Moderate: An above average level of fitness, you should be comfortable biking 45km on formed tracks and roads with some average to steep inclines at times.

Challenging: An above average level of fitness, you should be comfortable biking 50+km on partially formed tracks and roads, some off-road, some steep inclines, some easy river and creek crossings.

If you have any concerns about your fitness level, or ability to complete a tour, please call our office staff and we can discuss this further with you.

Can you pick me up for the tour? Yes, if your tour starts in Nelson, Christchurch, Queenstown or Rotorua pickups and drop offs are available at most central city hotels and motels. Pick-ups are not possible at Airbnb properties or in residential suburbs. Please check with our office before you book accommodation if you are not sure about the location of your stay. If your tour departs from Picton we ask you to make your own way to the meeting point on the wharf for the tour departure.





The West Coast Trail



FAQ's - frequently asked questions - continued

What's the best time to do a tour? New Zealand is known to have four seasons in a day. Rain can be expected at any time throughout the year, and we depart rain, or fine so you should always be prepared for sudden changes in weather or temperature and always have the appropriate gear with you. Gear lists are in our trip notes for each tour.

Spring (September-November) and Autumn (March-May) are generally cooler months for experiencing the outdoors with temperatures averaging 15-25 degrees during the day.

Summer (December-February) is usually warmer with averages of 20-30 degrees and has longer sunshine hours due to daylight saving. We typically see more activity on the trails over February, March and April so September to December can be a quieter time to travel if you prefer trails less busy.

Do I have breakfast on the first day or is this included? Your tour starts after we pick you up on the first day so please come having had breakfast. After this all meals on tour are included for you as per the trip inclusions in your itinerary.

What sort of food do you provide? We provide continental breakfasts, either café or packed lunches, and an evening meal either in-house at your accommodation, or dining out at a local restaurant. We can cater for vegetarian, vegan, gluten free and dairy free diets, and most food allergies, however these need to be advised at the time of booking.

Do you provide alcohol? No but this can be purchased each evening with your meal, or you are welcome to bring a small amount for your own personal consumption. BYO is not available when dining at licensed premises.

Do I need to come ready to walk or cycle? Yes, please come dressed ready to walk or cycle with your overnight bag packed ready for the transport. During the day you will not have access to your overnight bag so please make sure to have all the items you require for use during the day, packed in a day pack for easy access. For some of the tours there is a ride of up to several hours in the bus to get to your start location, if you are not comfortable travelling in full walk or cycle gear, please have this readily available to change into before the walk /ride starts.

Can I fly in/fly out the same day? Ideally, we recommend you arrive the day prior to your tour and depart the morning after the tour finishes just in case there are any unexpected delays or cancellations to your flights.

Can I bring my own bike for the cycle tours? Yes, please make sure it has been serviced and is fit for purpose for the trail you are undertaking. If you are not sure, please check with our office staff on booking.

What comes with the hire bikes? Our hire E bikes, and standard bikes all come with a comfortable memory foam saddle and a rack bag for carrying your jacket, phone, and a drink bottle. Helmets and hi-vis garments are issued with each bike, and as helmets are required by law in New Zealand, we ask riders to wear these at all times while riding. The support vehicle is never far away if you need access to other items of your clothing or equipment.

How much luggage can I bring on tour? Space is limited so we would appreciate if you could please keep your luggage to one hand carry and one overnight bag or suitcase max 20kg. For the Abel Tasman we provide a bag for you to pack into (please see trip notes for the Abel Tasman tours) and for Queen Charlotte tours please limit luggage to 15kg as there are restrictions on the size and weight of bags that can be transported on the water taxis. On some of the hiking tours you may be required to carry your own pack, this is specified in the packing list for your tour

Are all your tours guided?

Our walking tours, with the exception of the Queen Charlotte Boat stay tour, are all guided by a knowledgeable local guide, they provide information on the terrain you are passing through as well as logistical support.

On a cycle tour we provide a support vehicle and driver-guide throughout to help with any bike issues, first aid, trail instructions and to set up for meal breaks. On occasion they will bike a section of the trail with you to highlight places of interest or point out directions, but they do not guide the full trail. If anyone needs to take a break from the riding, you are welcome to make use of the vehicle at any stage.

If there is something we have not covered in these FAQ's please feel free to call **0800 377 378** or email our office team for further assistance.



The West Coast Trail



Immerse yourself in the natural beauty and history of the famous West Coast

4 Days, 3 Nights

Easy Grade

making an enquiry

Go to www.tuataratours.co.nz, click the make an enquiry button and submit your enquiry using the form provided.

We enjoy talking to people about their travel interests. So feel free to contact us directly if you'd rather not fill out a form.

- New Zealand: 0800 377 378
- Australia: 1 800 044 633
- World: +64 3 962 3280
- Email: info@tuataratours.co.nz
- Web: www.tuataratours.co.nz

custom tours

We Can Customise Existing Tours - You may want to spend an extra day or you may want to add an element to your tour!

We Can Design A New Tour Just For You. We have years of experience in creating custom-made tours for groups, so if you are planning a tour for your friends, family, club, corporate workplace.... contact us now.

subscribe to our newsletter

Our newsletter will be emailed to you monthly on the first working day of every month.

- latest trips
- travel advice
- events & attractions
- and more!

Go to www.tuataratours.co.nz and go to the newsletter sign up in the footer of any page.



Tuataratours NZ Ltd, PO Box 13544, Christchurch 8141, New Zealand
Phone: New Zealand: 0800 377 378, Australia: 1 800 044 633, World: +64 3 962 3280
Email: info@tuataratours.co.nz, Web: www.tuataratours.co.nz





The West Coast Trail



Pre and Post Departure Accommodation Options - Christchurch

Each of the properties below can be booked directly with the host for the best rates.

On the morning of your tour, we will meet you at your accommodation. Please let us know where you have booked to stay and we will confirm the time for pickup with you. For some of the locations below, we may ask you to walk a short distance to the nearest bus stop for pickup as parking is not available directly in front of the property.

Please note: Pickups are not available at Airbnb properties or in residential suburbs, if you are not sure about your pre/post tour location please call or email us to check.

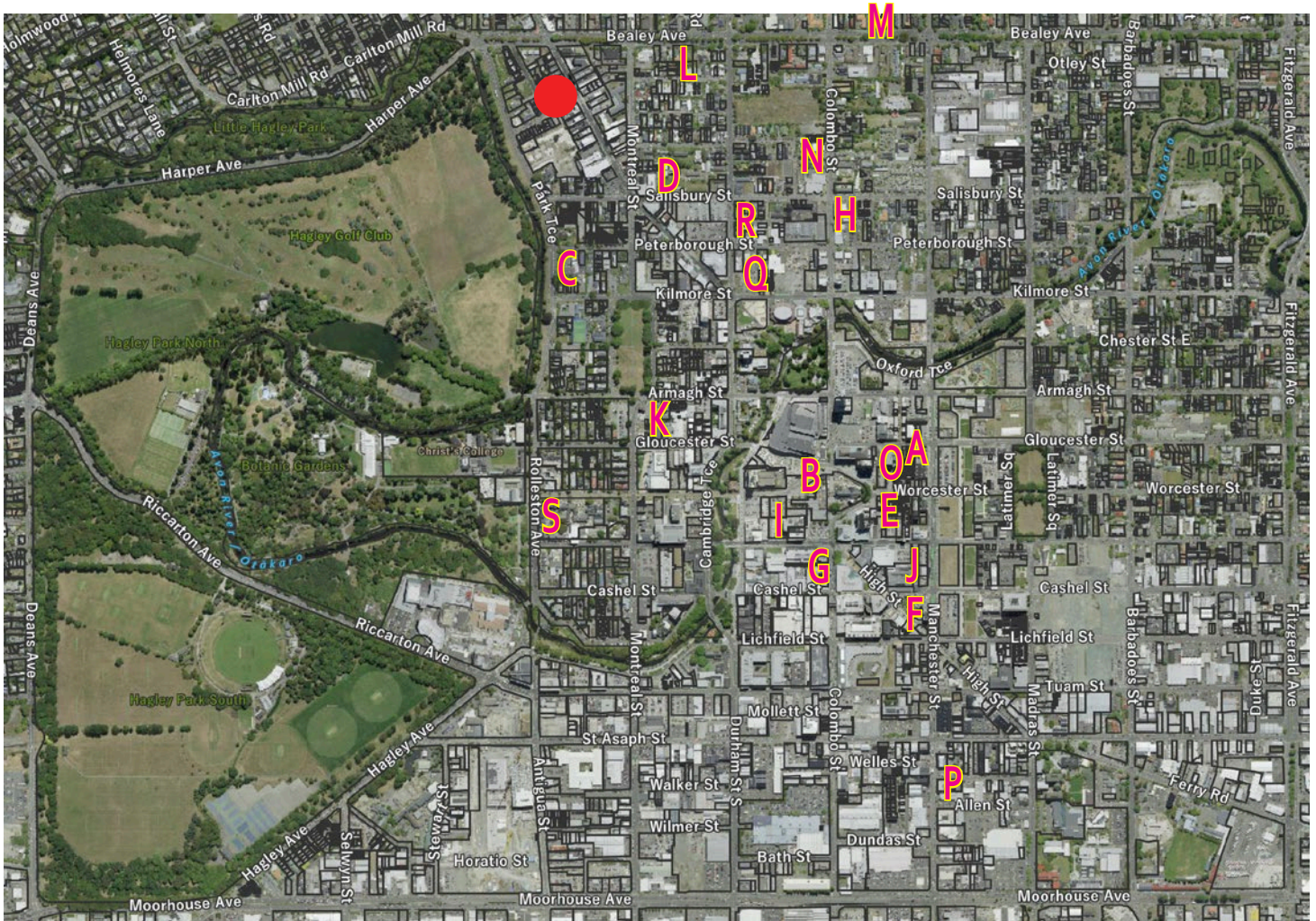
PROPERTY TYPE	WEBSITE	LOCATION
4-5-5 STAR HOTELS		
Fable Hotel	https://www.fablehotelsandresorts.com/hotels/fable-christchurch	166 Gloucester St-City Centre
Novotel	http://www.novotel.com/gb/city/hotels-christchurch-v5065.shtml	Cathedral Square-City Centre
George Hotel	https://www.thegeorge.com/	Park Terrace-10 min walk to city centre
Sudima Hotel	https://www.sudimahotels.com/en/our-hotels/christchurch-city/	Victoria and Salisbury Streets- 5 min walk to city centre
OGB Suites	https://www.ogbsuites.co.nz/	28 Cathedral Square-City Centre
Muse Art Hotel	https://themusehotel.co.nz/	159 Manchester St-City Centre
ECONOMY HOTELS	3STAR+	
Christchurch City Hotel	https://www.christchurchcityhotel.co.nz/about	699 Colombo Street-city centre
Carnmore Hotel	https://carnmorehotelchristchurch.co.nz/	Cnr Colombo and Salisbury Sts-5 min walk to city centre
Hotel Ibis	http://www.ibis.com/gb/hotel-5983-ibis-christchurch/index.shtml	107 Hereford Street-City Centre
Breakfree on Cashel	http://www.breakfreeoncashel.nz/	165 Cashel Street-City Centre
GUEST HOUSES B&B		
The Grange B&B	http://www.thegrange.co.nz/	56 Armagh Street-10-minute walk to city centre
MOTELS	SELF CATERING	
Tuscana Motel	http://www.tuscana.co.nz/	74 Bealey Ave- 15-minute walk to city centre
Bella Vista Motel	https://www.bellavista.co.nz/our-motels/christchurch	193 Bealey Ave-15-minute walk to city centre
Colombo in the City Motel	http://www.colombointhecity.co.nz/	863 Colombo Street-10-minute walk to city centre
Quest Apartments Cathedral Junction	https://www.questapartments.co.nz/properties/south-island/christchurch/quest-christchurch/overview	113 Worcester St-City Centre
Quest Manchester	https://www.questapartments.co.nz/properties/south-island/christchurch/quest-on-manchester/hotel-rooms	54 Manchester Street- City Centre
Fino Hotel and Suites	http://fino.nz/	87 Kilmore St-5 minute walk to city centre
Focus Motel	https://focusmotel.co.nz/	344 Durham St North-7 minute walk to city centre
BACKPACKERS		
Hotel Give- (part of YMCA Hereford St)	https://hotelgive.nz/	12 Hereford St-City Centre




The West Coast Trail



Pre and Post Tour Accommodation Options in Christchurch



- | | | | |
|---|-------------------------|---|--|
| A | Fable Hotel | K | The Grange B&B |
| B | Novotel | L | Tuscana Motel |
| C | George Hotel | M | Bella Vista Motel |
| D | Sudima Hotel | N | Colombo in the City Motel |
| E | OGB Suites | O | Quest Apartments Cathedral Junction |
| F | Muse Art Hotel | P | Quest Manchester |
| G | Christchurch City Hotel | Q | Fino Hotel and Suites |
| H | Carmore Hotel | R | Focus Motel |
| I | Hotel Ibis | S | Hotel Give- (part of YMCA Hereford St) |
| J | Breakfree on Cashel | | |
| | |  | Tuatara Tours Office 122 Victoria Street |



Tuatara Tours NZ Ltd, PO Box 13544, Christchurch 8141, New Zealand
 Phone: New Zealand: 0800 377 378, Australia: 1 800 044 633, World: +64 3 962 3280
 Email: info@tuataratours.co.nz, Web: www.tuataratours.co.nz





The West Coast Trail



TERMS & CONDITIONS

Tuatara Tours NZ Limited accepts bookings subject to the following conditions:

Contract

This contract is between Tuatara Tours and you the client being any person travelling or intending to travel on a tour supplied by Tuatara Tours as the operator. The contract, including all matters arising from it, is subject to New Zealand law and the exclusive jurisdiction of the New Zealand courts. Only Employees and Directors of Tuatara Tours have authority to vary or omit any of the terms.

Cancellation Policy due to travel restriction that is imposed by either the New Zealand government or any other government.

Should your trip be impacted by a travel restriction that is imposed by either the New Zealand government or any other government, we will either work with you to transfer your trip to a future date at no additional cost, or provide you with a full refund.

Price

The price is quoted in New Zealand dollars and includes GST of 15%. The price is based on prices at time of publishing and Tuatara Tours hereby reserves to modify without notice those prices in any way considered necessary or desirable.

Organised tour accommodations are based on a twin/double share accommodation. Individual travellers will be placed in rooms together with other individual travellers of the same sex. A single supplement is available on request.

Confirmation of Booking

Bookings are confirmed upon receipt of the full tour price which is payable 90 days prior to the commencement of the tour. Tuatara Tours or their agents reserve their right to decline any booking at their discretion.

Cancellation

If a client wishes to cancel a Tour the following charges will be applied: (Unless stated otherwise)

1. 91+ days prior to departure – no fee
2. 90-60 days prior to departure – NZD\$300.00 per person applies
3. 59-30 days prior to departure – 30% of total package cost applies
4. 29-0 days prior to departure – 100% of total package cost applies
5. After tour commencement – no refund available.

These cancellation fees are not negotiable, therefore we strongly recommend that you purchase travel insurance.

Travel Insurance

Tuatara Tours recommends that the client take out tour cancellation insurance together with all other necessary travel insurances. Obtaining all necessary insurances is the responsibility of you the client and Tuatara Tours can not held liable for any failure on your part to get insurance.

Medical conditions

When you book you must notify us of any medical condition, medical history or medication that you are on.

Changes to Tours

Tuatara Tours will use its best endeavours to ensure that all tours are operated as advertised. It may be that reasonable changes in the itinerary may need to be made where is deemed necessary or advisable by Tuatara Tours. Changes will be advised to the client as soon as is reasonably possible. Where a tour service needs to be changed, a substitute or similar quality or standard will be provided.

Weather

Adverse weather conditions may mean that planned activities cannot proceed as intended. A decision to change an advertised tour based on the weather conditions will be made by a tour guide at the time and is made in the best interest of the group and their safety. Tuatara Tours and or their contracted suppliers can not be held responsible to any changes as a result of the weather.

General conditions

Tuatara Tours, its agents, contractors and guides do not accept responsibility or liability for loss, damage to, or theft of personal belongings (owners risk) or for any expenses, including medical and transport expenses arising from a personal accident, injury, illness, or hospitalisation. Tuatara Tours and their guides reserve the right to make any alterations to the itinerary in the interest of safety, or unforeseen circumstances due to causes such as weather, illness or misadventure. Every reasonable endeavour will be made to keep to published schedules but no guarantee is given. Tuatara Tours will not be held liable for costs incurred by change, delay or the missing of connecting services. Tuatara Tours reserves the right to exclude a person from a tour at any time, if in the opinion of the guide or operator, that person may be likely to risk the health, safety or comfort (including unsociable behaviour) of other clients, him or herself or the environment. In such circumstances, Tuatara Tours will not be obliged to offer any refund or transfer ticket. These terms and conditions apply to each participant including in a group booking. Where a booking is made on behalf of a group or two or more people then each participant in the group must be made aware of and accept these terms and conditions.





The West Coast Trail



RISK DISCLOSURE STATEMENT

In any adventure activity, there is an element of risk involved. Risks in undertaking this activity include (but are not limited to): hypothermia, heat exhaustion, physical injury caused by environment i.e. rock falls, and physical injury caused by self, i.e. falling over.

Tongariro National Park is an active volcanic area, and eruptions from any of the volcanoes can happen at any time. Early warning systems and alarms are in place that indicate times of increased volcanic activity, however events can occur without any warning.

The staff and management of TuataraTours and any of its agency partners take all practicable steps to identify and minimise potential dangers. The Operator makes all arrangements for all tours on the condition that it shall not be liable for any sickness, injury, damage, loss, accident, delay or irregularity which may be occasioned, either directly or indirectly, by reason of any defect in any vehicle, vessel or aircraft, by weather, by any other cause, or through acts of default of a company or person engaged in conveying the passengers, or in carrying out arrangements for these activities.

We strongly recommend that you purchase travel insurance prior to your trip. By participating in this activity, you are expressly assuming those risks and responsibilities and are, to the maximum extent permitted by law releasing the Operator, its officers, employees, directors, agents and any other person associated with us, from any liability, claims, loss, damages or expenses (whatsoever and irrespective of whether direct, indirect or consequential) caused by any event including but not limited to: personal injury or death; property loss or damage; acts which may be construed as negligible or accidental; any other loss, damage, suffering, emotional or nervous disorder suffered by you or any other person in relation to this activity. You accept that you have been advised to obtain adequate travel insurance for all persons named on the booking.

In participating in the activity, the customer agrees to be bound by the following conditions:

- My successors, executors and administrators are bound by the Terms and Conditions;
- I agree not to commence any litigation proceedings in any country in relation to the risks and liabilities set out above and to indemnify the Operator against any claims;
- I confirm and warrant I am physically fit and suffer no medical conditions, which may affect my ability to participate in the activity;
- I confirm I am aware that professional medical assistance may be difficult and/or take some time to access due to the remote areas in which we are travelling;
- I consent to receive medical treatment in the case of injury, accident or illness during the activity and to indemnify the Operator against any claims, costs or expenses in respect of the treatment;
- I agree that any film, sound, video or other recordings taken of or during the activity will not be used in any production, or advertising without prior consent of the Operator, however the Operator may use such recordings itself at its complete discretion without any prior approval; and
- I agree to listen to my driver/guide/host, follow their instructions and make sure any children in my care do the same. Furthermore, the Operator will not be responsible for any personal injury and/or property damage caused by you and any costs for such injury/damage will be your responsibility. You shall indemnify the Operator in relation to such costs.

NZ Walking Tours

- The Akaroa Walk
- The Queenstown Ben Lomond Walk
- The Queen Charlotte Walk
- The West Coast Trail
- The Hump Ridge Track Walk
- The Coromandel Explorer Walk
- The Tongariro Crossing Walk
- The Waikaremoana Discovery
- Great Barrier Island Escape
- The Abel Tasman Walk - 3 Days
- The Abel Tasman Walk - 5 Days
- The Abel Tasman Walk/Kayak - 3 Days
- The Abel Tasman Walk/Kayak - 5 Days
- Bucket List Walk

NZ Cycling Tours

- Around The Mountains Cycle Trail
- The Alps 2 Ocean Cycle Trail
- The West Coast Wilderness Cycle Trail
- The Queenstown Cycle Trail
- The Otago Rail Trail
- The Tasman Great Taste Trail and Golden Bay Explorer

Overseas Tours

- Bhutan Tours
- Japan Walking Tours
- Australia Walking Tours

All of these tours and more available at www.tuataratours.co.nz

